

USER'S MANUAL

LABEL PRINTER

LDT124



TABLE OF CONTENTS

• Getting Started	4
• Product Overview	4
• Packaging Information	4
• Box Content	6
• Printer Specifications	7
• Product Installation Guide	9
• Connect to power	9
• Label Installation	10



DISCLAIMER

Please be aware that the interface and appearance of the all-in-one shown in this picture may differ depending on the specific model you have purchased. For precise information regarding the transmission interface and appearance, we advise consulting the actual product or reaching out to your supplier directly.

GETTING STARTED

This document provides detailed specifications and user guidance for the product, along with clear instructions on packaging, accessories, and standard procedures for promoting and selling the device.

Intended for use by 3nStar team members, agents, and customers, this manual outlines important information to ensure proper handling and communication regarding our POS solutions. Please be aware that 3nStar is not liable for any losses resulting from the use of the information contained herein, nor are we or our affiliates responsible for any damage, loss, cost, or expenses arising from unauthorized modifications, repairs, or alterations made by users or third parties.

Note: As part of our commitment to continuous improvement, product specifications and included accessories are subject to change without prior notice. Always refer to the actual device for the most accurate and up-to-date information.

IMPORTANT INFORMATION:

- There are no user-serviceable parts inside the POS terminal or its peripherals. Do not attempt to modify the unit or use non-certified accessories.
- Store any removed parts, cables, or screws safely for future use.
- For maintenance or replacement, contact your supplier or technical support to purchase certified parts and accessories.

PRODUCT OVERVIEW

The Thermal Barcode Desktop Printer, model LDT124, is designed with an innovative software ecosystem suitable for retail, manufacturing, and transportation industries. It features an expanded memory capacity to store a greater variety of fonts, graphics, and data, enhancing versatility and performance.



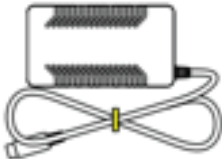

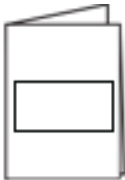

For added convenience, the printer offers optional real-time clock (RTC) functionality to automatically print the date and time on labels, as well as an optional MicroSD card slot for flash memory expansion. Its 5-inch media outer diameter capacity minimizes operational interruptions, ensuring greater efficiency. Additionally, the device supports TSPL-EZD emulation, further broadening its compatibility and usability.

PACKAGING INFORMATION

SIZE	WEIGHT	MATERIAL	FILLING
285*215*195mm(D*H*W)	2.2Kg	K=K Reinforced	EPE Foam



BOX CONTENT

ITEM	QUANTITY	
THERMAL PRINTER	1	
POWER CORD	1	
POWER ADAPTER	1	
USB CABLE	1	
QUICK START GUIDE	1	
LABEL HOLDER KIT	1	

PRINTER SPECIFICATIONS

Resolution	203DPI
Print Method	Direct Thermal
Memory	Standard: 32 MB SDRAM, 16 MB Flash
Max. Print Width	4.25 in./108 mm
Max. Print Speed	Up to 6 ips (152 mm/s)
Media Sensors	Movable Black Mark Sensor
	Fixed Gap Sensor
Emulation	TSPL, ZPL, EPL, DPL
Interface	USB+Ethernet
Media Characteristics	
Media Length	0.39 in. - 70 in. (10 mm - 1778 mm)
Media Width	1.18 in. - 4.56 in. (30 mm - 116 mm)
Media Roll Size	5 in./127 mm Outer Diameter
	Core Inner Diameter: 1 in. (25.4 mm) - 1.5in. (38.1mm)
Thickness	0.0023 in. (0.06 mm) Min.; 0.01 in. (0.254 mm) Max.
Media Types	Continuous, Gap, Black mark,
	Fan-fold, Perforated Media
Environment Condition	
Operating Temp.	5~40°C (41~104°F)
Storage Temp.	-40~60°C (-40~140°F)
Operating Humidity	25 ~ 85% Non-Condensing
Storage Humidity	10 ~ 90% Non-Condensing
Fonts/Symbologies	
1D Bar Codes	Code 39, Code 93, Code 128UCC,
	Code 128 subsets A, B, C, Codabar, Interleaved 2 of 5,
	EAN-8,EAN-13,EAN-128, UPC-A, UPC-E,
	EAN and UPC 2(5) digits add-on, MSI,
	PLESSEY, POSTNET, China POST,
	GS1 DataBar, Code 11

2D Bar Codes	PDF-417, Maxicode, DataMatrix, QR code, Aztec
Fonts and Graphics	Font 0 ~ Font 8
Software	
Driver	Windows / Linux / Mac / Android / Chrome OS
SDK	Windows / Linux / Android / iOS
Software	Bartender UltraLite / Mobile Label Design App
Accessories	
Standard Accessories	Power Adapter x 1
	Power Cord x 1
	USB Cable x 1
	User Manual x 1
	Label Spindle x 1
	Fixing Tab x 2
Factory Installed Options	Bluetooth Module, Wi-Fi Module, RTC Module
User Options	8" External Paper Roll Holder
Product Warranty	
Printhead life	The earlier of 30 km usage or 1 year
Platen roller life	The earlier of 30 km usage or 1 year
Printer Warranty	1 Year
Physical Characteristics	
Dimension	220 mm x 178 mm x 158 mm (D x W x H)
Weight	1.3 kg

PRODUCT INSTALLATION GUIDE

Connect to power

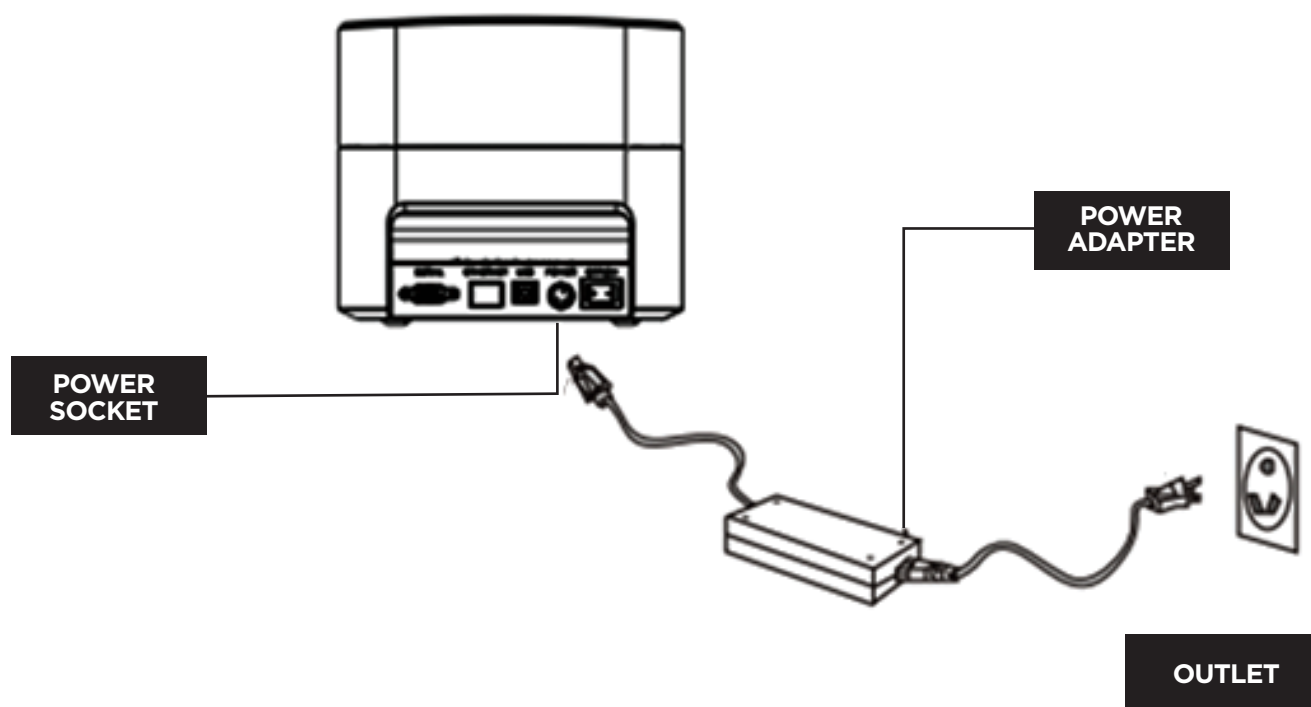
Before beginning installation, ensure you have all necessary components on hand, including the power adapter and printer.

Begin by plugging the power adapter securely into a suitable electrical outlet, then connect it to the printer's power input port.

Once these connections are made, locate the power switch on the rear of the printer and turn it on. It's advisable to check that the voltage rating matches your region's standards to prevent any electrical damage.

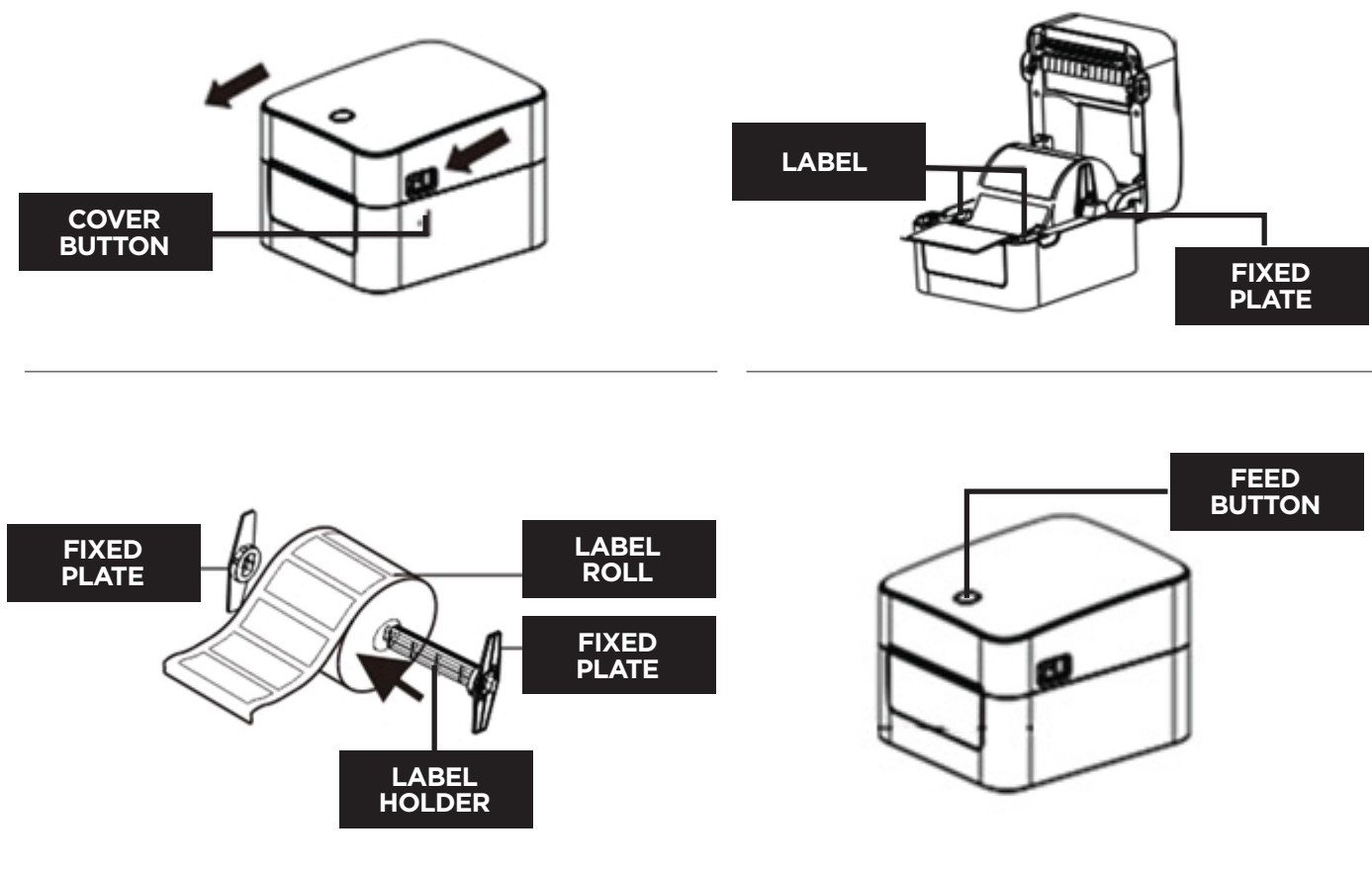
During initial setup, verify that all cables are firmly connected and the printer is placed on a stable, flat surface to guarantee safe operation. Taking these preliminary steps will help provide reliable power, reduce the risk of malfunctions, and prepare your printer for further installation or use.

Please Note: Please make sure the switch on the back is on off position before connecting to adapter. The communication port might be different with your product.

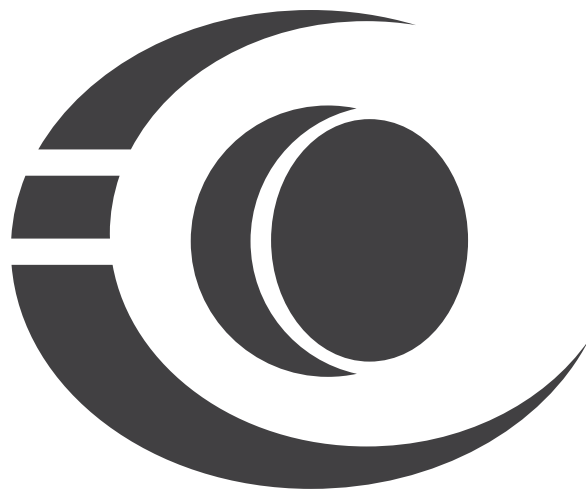


Label Installation

1. Open the printer cover.
2. Position the label roll on the holder with the print side up.
3. Feed the label through the paper guide and over the rubber roller.
4. Adjust the guide to fit the label width, ensuring light contact.
5. To load the label or paper, click Feed. If you want to pause printing, click Feed again. To print a self-test page, hold Feed while turning on the printer and let go after the purple light blinks twice.



LED COLOR	DESCRIPTION
Blue (Fixed)	Standby
Blue (Blinking)	Pause
Red (Fixed)	Cover opened is detected
Red (Blinking)	Error during printing



www.3nstar.com



3nstar