

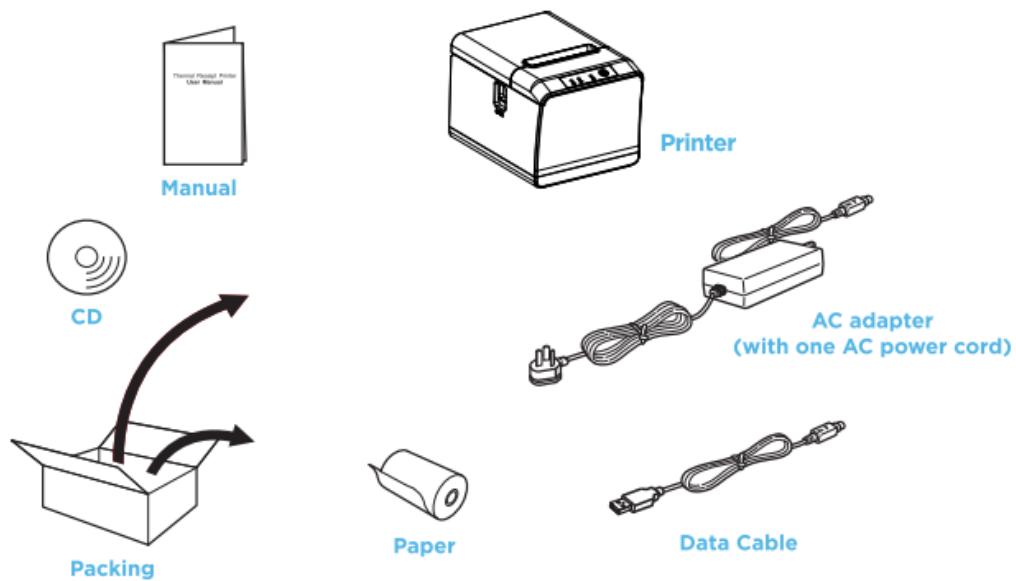
USER MANUAL



RPT004

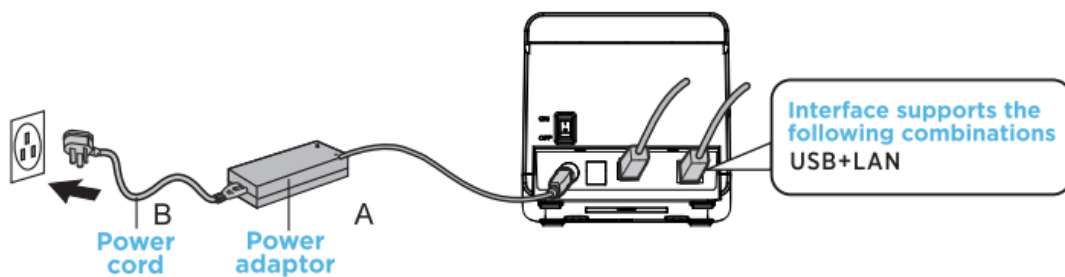
WHATS IN THE BOX

- 80mm Thermal Receipt Printer
- AC adapter with one AC cable power cord
- Data Cable except for Ethernet Port
- User's Manual
- 80mm roll paper
- Software Disc (optional)
- Wi-Fi antenna (for Wi-Fi printer with external antenna only)



CONNECTING THE CABLES

- Connect the adapter cable to the printer power interface.
- Connect the data cable to the printer port.
- Connect the cash draw to the printer.

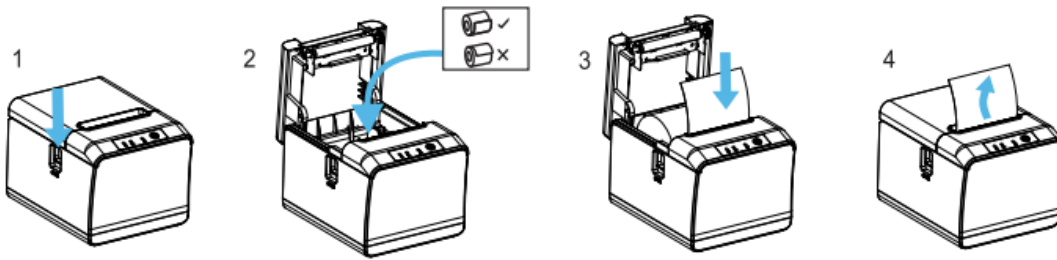


PAPER ROLL INSTALLATION

The steps to install a paper roll are as follows:

1. Open the printer cover.
2. Install the thermal paper roll into the printer as shown in the following.
3. Pull out a small section of the paper until it is outside the cover, then close the cover.

Note: Make sure that the paper roll is installed correctly to prevent any paper jams or feeding issues.



PRINTER FUNCTION SETTINGS

DIP switch can be used to change the settings of the printer, including cutter, beeper, printing width, language, Character per line, cutter with cash drawer, and baud rate of serial port.

DIP Switch functions

| DIP Function | | | | |
|--------------------------------|-------------------------|--------|------|-------|
| No. | Function | | ON | OFF |
| SW-1 | Select cutter | | NO | YES |
| SW-2 | Select beeper | | YES | NO |
| SW-3 | Select print density | | DARK | LIGHT |
| SW-4 | Two-byte character code | | NO | YES |
| SW-5 | Character per line | | 42 | 48 |
| SW-6 | Cutter with cash drawer | | YES | NO |
| SW-7 | ON | OFF | ON | OFF |
| SW-8 | ON | ON | OFF | OFF |
| Transmission speed (bps)-bit/s | 38400 | 115200 | 9600 | 19200 |

BUTTON AND INDICATORS

(1) FEED BUTTON

Press to FEED paper manually.

(2) PAPER INDICATOR

When this indicator and Error indicator are ON, it means the printer is out of paper; when both lights are off, it means the printer has paper.

(3) POWER INDICATOR

This LED is on indicates that the printer is powered on. This LED off indicates that the printer is powered off.

(4) ERROR INDICATOR

When the printer encounters errors cutter error, and printhead overheating, the Error LED will flash.

SELF TEST

1. Turn off the printer.
2. Press and hold on the FEED button.
3. Turn on the printer, wait for the ERROR and PAPER's LEDs are flash, then release the FEED button.

METHOD TO ENTER HEXADECIMAL MODE

To enter the hexadecimal dump mode, turn off the printer, press and hold on the FEED button, then turn on the printer. After waiting for about 10 seconds, press the FEED button. The printer will enter the hexadecimal dump mode and print out 'Hexadecimal Dump'.

PRINTER DEFAULT SETTINGS

Turn off the printer, press and hold on the FEED button, then turn on the printer. After waiting for approximately 20 seconds and hearing two beeps from the printer, release the FEED button to complete the factory default settings.

HOW TO SOLVE PAPER JAM

(1) METHOD 1

Re-start printer.

(2) METHOD 2

Open the cover located at the top edge of the paper outlet, then turn the white gear on top of the cutter. Once the cutter returns to its initial position, the printer will be ready for normal use.

CAUTION: Do not force open the cover, as this may damage the printhead and the cutter.

CAUTIONS:

1. The printer should be installed in a stable place and avoid placing the printer in vibration and shake.
2. Do not use and store the printer in places with high temperatures, high humidity, and serious pollution.
3. Connect the printer's power adapter to a properly grounded socket. Avoid using the same outlet with large motors or other equipment that can cause power supply voltage fluctuations.
4. Avoid water or conductive substances (such as metal) from entering the printer. If it happens, turn off the power immediately.
5. The printer must not print without paper, otherwise, it will seriously damage the printing rubber roller and thermal print head.
6. If the printer will not be used for a long time, please disconnect the power of the printer power adapter.
7. Users are not allowed to disassemble the printer for maintenance or modification without authorization.
8. The power adapter only uses the originally supplied with the printer.
9. To ensure printing quality and product life, it is recommended to use high-quality printing paper.
10. When plugging or unplugging the cable, please make sure that the power of the printer is turned off.
11. The power plug of the adapter is used as a power disconnecting device, and its socket is installed near the equipment and is easily accessible.
12. This product is only suitable for use at altitudes below 5000 meters and in tropical climates.

PRINTER CLEANING

The print head should be cleaned when the printer has one of the following conditions:

1. Printing is not clear.
2. The vertical column of the printed page is not clear.
3. Paper feed noise is loud.

The steps for cleaning the print head are as follows:

1. Turn off the printer, open the cover, and remove the paper
2. If finished printing, you should wait for the print head to cool down completely.
3. Use a soft cotton cloth dipped in absolute ethanol (should be wrung out) to wipe off the dust and stains on the surface of the thermal film of the print head.
4. Waiting for the absolute ethanol to evaporate completely, close the cover and try printing again.

NOTE:

1. Make sure that the power is turned off during routine maintenance of the printer.
2. Do not touch the surface of the print head with your hands and metal objects, and do not scratch the surface of the print head, printing cap, and sensor with tools such as silver.
3. Do not use organic solvents such as gasoline and acetone.
4. Wait for the absolute ethanol to evaporate completely, then turn on the power to continue printing.

ONE
BRAND
ONE
SOLUTION

