



# PTE0120

Point of Sale System J6412

# Table Of Contents

<b>Safety Precautions.....</b>	<b>1</b>
<b>Initial Installation.....</b>	<b>2</b>
<b>Touch POS Appearance.....</b>	<b>3</b>
<b>Product Description.....</b>	<b>4-9</b>
1. 15” inch LED Screen.....	4-5
2. Touch Screen Parameter .....	5
3. Motherboard Parameter.....	6-7
4. Mainboard & I/O Port.....	8-9
<b>Dual Screen Settings.....</b>	<b>10-11</b>
<b>Appendix: Names of toxic and harmful substances or elements and their contents....</b>	

## Safety Precautions

1. Select a flat and vibration-free table to place the terminal
2. The location of the terminal should be chosen to avoid direct sunlight, and exposure to water and dust
3. Please keep terminal away from strong electromagnetic fields.
4. To prevent fire or electric shock, please avoid blocking or covering air vents from terminal.
5. In areas of poor power quality or storage, this terminal should be equipped with a separate power supply to power it.
6. The product uses a standard wall outlet with earthling poles and cannot be arbitrarily changed. Confirm if the voltage nameplates of the drives match.
7. Make sure the ground prong of the power plug is in a power outlet or power strip grounding jack, and make sure that the grounding jack is thoroughly grounded. If poorly grounded or ungrounded, the result will be either an electric shock, a fire, or damage to the equipment.
8. The terminal is best to not start with other high-power appliances that frequently share the same socket outlet. The terminal should be located away from the cash register, in a close accessible way to swap.
9. This equipment should be connected to a variety of cables in case of power failure to ensure that the conduct takes the screws tighten well to be able to plug or unplug the cables.
10. Clean the terminal, please do not use a wet rag to wipe the body or chemicals such as: gasoline, thinners, etc.
11. When the terminal fails, immediately cut off power. Do not attempt to open or repair terminal, as well as to not let it be promptly used by others.

**WARNING:** For the non-compliance with the above issues, as well as non-qualified service personnel or the use of non-designated by the Company to provide and repair parts for maintenance of all the consequences, the Company does not assume any responsibility.

## Initial Installation

### 1. Unpacking

Immediately after unboxing the terminal, please verify if all products are none damaged. If product contains damaged hardware, please make sure to report the issue to the shipping company. Once reported the shipping company will immediately report the claim to the manufacturer. After unpacking, check if spare parts are complete.

### 2. Preparing for Installation

Examine the case for cleanliness, signs, marking, and if labeling is correct. Check the working environment because the cash register is a precision instrument and should be checked before using the surrounding environment so that it meets the technical specifications of the cash register. If inconsistent with the specifications, please do not use the cash registers.

### 3. The main technical specifications

Power supply voltage: 220VAC $\sim$   $\pm$  15%

Power: 80W  $\pm$  15%

Frequency: 50—60Hz

Temperature Operating: 0 °C  $\sim$  40 °C

Storage: -20 °C  $\sim$  +55 °C

Relative humidity: 20%  $\sim$  93% (40 °C)

### 4. Preparing for use

- When placing the machine, please make note of the cable line to ensure that the wires are fluent.
- Open the machine host power switch (note: we must ensure that there is a good power supply ground).
- System installation (cash registers at the factory with only the DOS operating system and customers using a genuine Windows operating system before installation).
- To perform some general sales operations, check monitors, printers, cash drawers and other peripherals to ensure that they're working properly.

## Touch POS Appearance



### PTE0120 POS

1. 15-inch main display (resistance touch display)
2. Power button
3. 9.7-inch custom display
4. MSR

## Product Description

### 1. 15-inch LED display parameter

Item	Specification	Unit
Screen Diagonal	15	Inch
Active Area	304.128(H)×228.096(V)	Mm
Pixel Pitch	0.099(H)×0.297(V)	mm
Resolution	1024(H)×768(V)	-
Pixel Arrangement	R.G.B. Vertical stripe	-
Display Mode	Normally Black	-
LED life	50000	Hour
White Luminance	350(Typ)	Nit
Contrast Ratio	1000:1(Typ)/700:1(Min)	-
Response Time	30	ms
Operating Voltage	3.3V	V
Surface Treatment	Hard-Coating(3H)	-
Outline Dimension	326.5(H)×253.5(V)×9.7(D)Typ.	Mm
Input signal	LVDS	-
Support Color	16.7M	-

Items	Symbol	Min.	Max.	Unit	Conditions
Supply Voltage	VDD	-0.5	5	V	-
Operating Temperature	TOP	-20	70	°C	Note
Storage Temperature	TST	-20	70	°C	Note

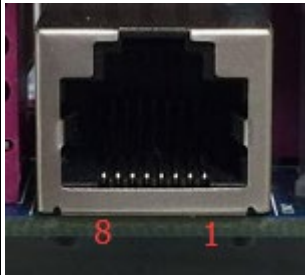
## 2. 15-inch touch screen parameter

Size	326mm x 252mm
Visual Area	304mm x 228mm (4: 3)
Resolution	1024 x 768
Refresh rate	60Hz
Dot pitch	0.297mm x 0.297mm
Resolution	4096 x 4096
color	16M
Response time	16ms

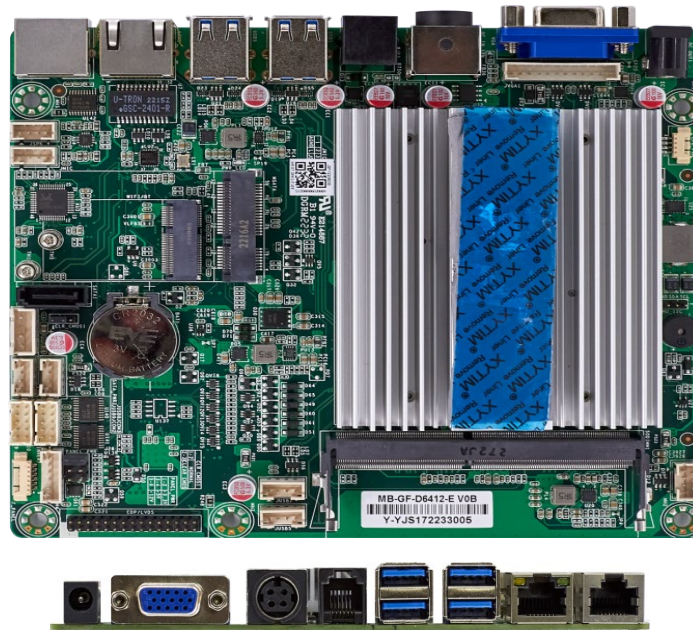
### 3. Motherboard parameter

Item		Specification
PCB	Form Factor	Special
	Dimensions	190*140mm
	Layer	6 Layers
	Color	Green
Processor	Processor	Intel Celeron J6412 2.0GHz Burst To 2.6GHz (Elkhart Lake)
	Socket	FCBGA1493
	TDP	10W
	Heat dissipation	No FAN
Chips	PCH	N/A
	CPU_PWM	MP2940+MP2941
	Super I/O	IT8786E-I/EX
	LVDS	CH7511B
	COM	75232
	LAN	compatible with RTL8111H-VB-CG and RTL8111H-CG, Colay RTL8106E
	Audio	ALC897-VA2, NS4251, 3W4Ω
Memory	SlotType	DDR4 SO-DIMM
	Slot Number	1



	Memory Type	DDR4 2400MHz	
	Max Memory	16GB	
Graphics	Controller	Intel® HD Graphics	
	VGA	1*DB15, 1*Header	
	EDP/LVDS	1, LVDS, Colay EDP	
	Multi Display	2	
LAN	Connector	1*RJ45	
	PXE/RPL Boot Rom	YES	
	Wake Up On LAN	YES	
USB	USB2.0	5	
	USB3.0	4	
Other	BUZZER	1	
	CMOS Battery	1	
COM1		Pin	Signal
		1	GND
		2	RX
		3	TX
		4	RI
		5	GND
		6	RX
		7	TX
		8	RI

#### 4. Main board & I/O Port

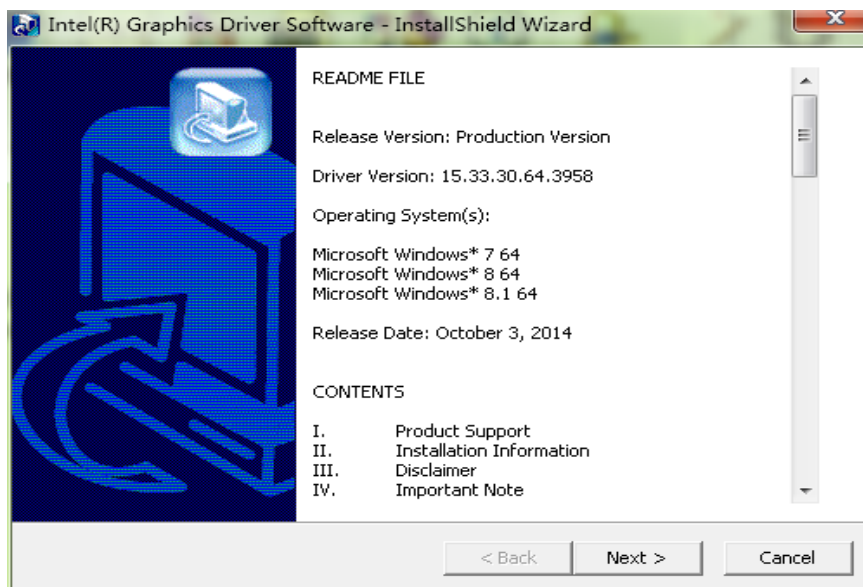
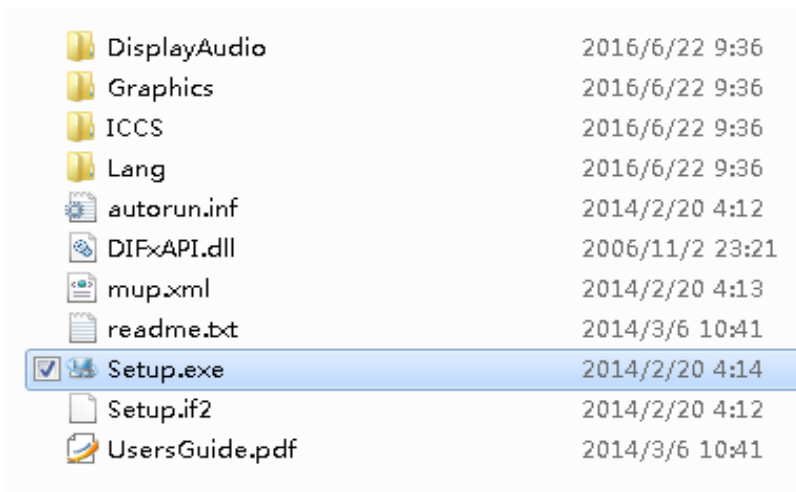
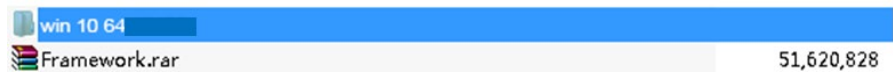
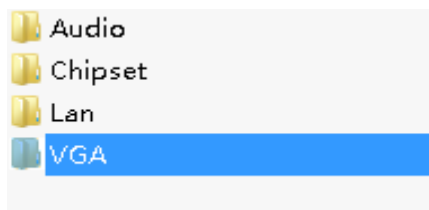


NUM	Label	Components
1	JSPK	Speaker
2	JMIC	MIC
3	SATA	SATA SSD
4	SATA-PWR	4 pin Hard disk power-supply port
5	CLR_COMS	Clean COMS setting
6	JUSB	USB2.0
7	JUSB	USB2.0
8	JCOM2	COM2 port
9	JCOM3	COM3 port
10	F-PANEL	Turn on/off ,Hard disk indicator light
11	INVTER	Display backlight port
12	PANEL_PWR	Setting display supply voltage

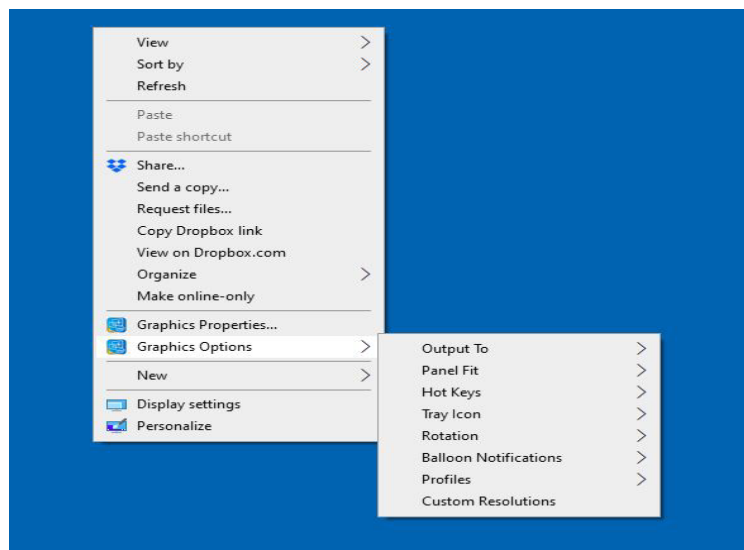
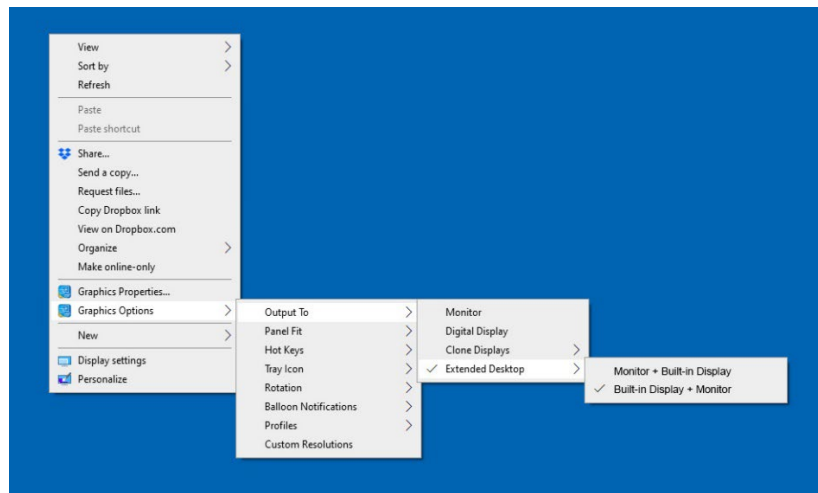
13	LVDS	Connect LVDS display
14	WIFI/BT	Connect to WI-FI or Bluetooth
15	MINI SATA	Mini hard disk port
16	JUSB	USB 2.0 port
17	JUSB	USB 2.0 port
18	SO-DIMM	Memory port
19	JUSB	USB 2.0 port
20	CPU-FAN	CPU fans port
21	VGA	VGA port(inside)
22	DC OUT	12V power output
23	VGA	VGA port
24	DC IN	12V power input
25	RJ12	Cash drawer port(12V or 24V can be selected by jumper ,Support OPOS)
26	USB	USB 3.0 port
27	USB	USB 3.0 port
28	LAN	Network port
29	RJ45(COM)	COM1 port

### 5. Dual screen settings

A) Open the folder in turn ,Install VGA driver. Then reboot the computer.



- B)** In the Desktop, Click the right mouse button, in turn , select ”Graphics Options”-“Output To” - “Extended Desktop” - “Built-in Display +Monitor”





**Warm Tips:**

3nStar does not provide any data restoration and the backup service. 3nStar is not responsible for damage or loss of data, programs, or storage media. Please make sure you are in time to backup any information or programs that you consider valuable. Thank you for your cooperation!

## Appendix: Names of toxic and harmful substances or elements and their contents

Part	Hazardous substance					
	Pb	Hg	Cd	Cr(VI)	PBB	PBD E
External device	×	×	○	○	○	○
Cable part	×	○	○	○	○	○
Switching power supply	×	×	○	○	○	○
Mainboard and PCBA	×	○	○	○	○	○
Memory	×	○	○	○	○	○
HDD/SSD	×	○	○	○	○	○
FAN	×	×	○	○	○	○
Plastic part	○	○	○	○	○	○
Aluminium alloy	×	○	○	×	○	○

○ : Said the content of toxic and harmful substances in all homogeneous materials in the parts are specified in the SJ/T 113632006 limited the following requirements.

× : Said the content of toxic and harmful substances in at least one of the homogeneous materials beyond the limitation of SJ/T11363 - 2006 provisions; on the table in the "X" components, due to technical reasons at present can not achieve the replacement, follow-up will gradually improve.

Note: the peripheral component contains the keyboard, display, printer, cash drawer, adapter, customer display, laser gun or scanner

ONE  
BRAND  
ONE  
SOLUTION

