

PTE0105-MSR OPOS User Manual

1:Install the MSR OPOS ActiveX

Double-click to run the file of OposInstallocx.bat file.

名称	修改日期	类型	大小
OposDriver.dll	2019/7/25 18:38	应用程序扩展	2,347 KB
OposInstallocx.bat	2019/5/28 16:21	Windows 批处理...	1 KB
OPOSMSR.ocx	2018/9/17 15:27	ActiveX 控件	140 KB
OPOSMSRTEST.exe	2019/7/29 14:52	应用程序	929 KB

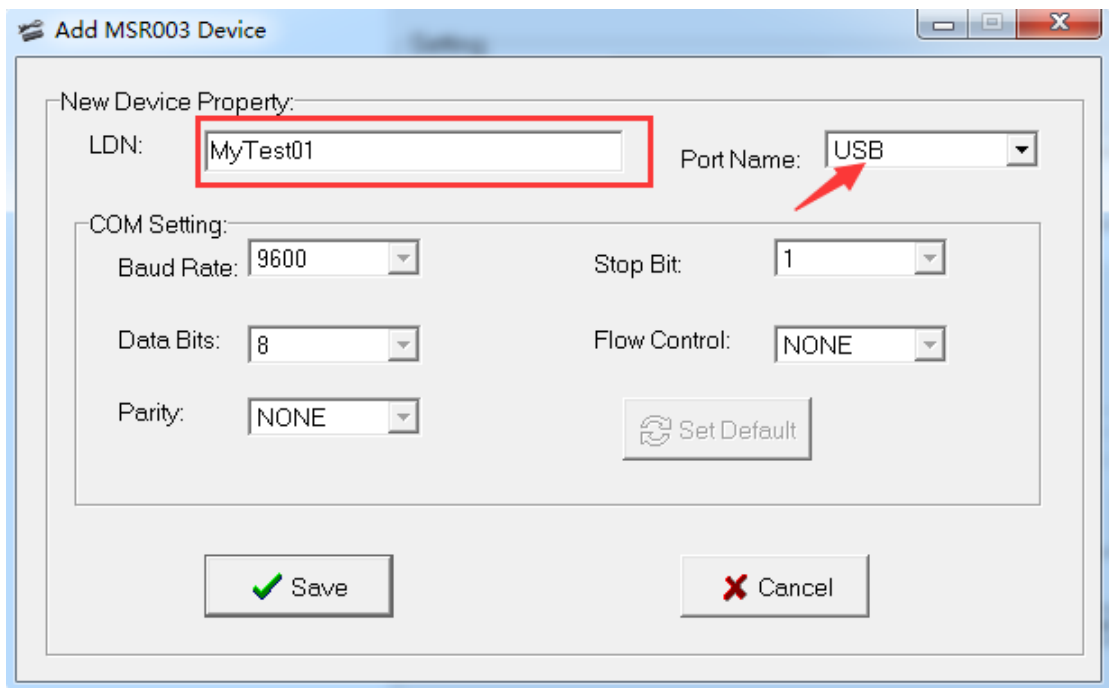
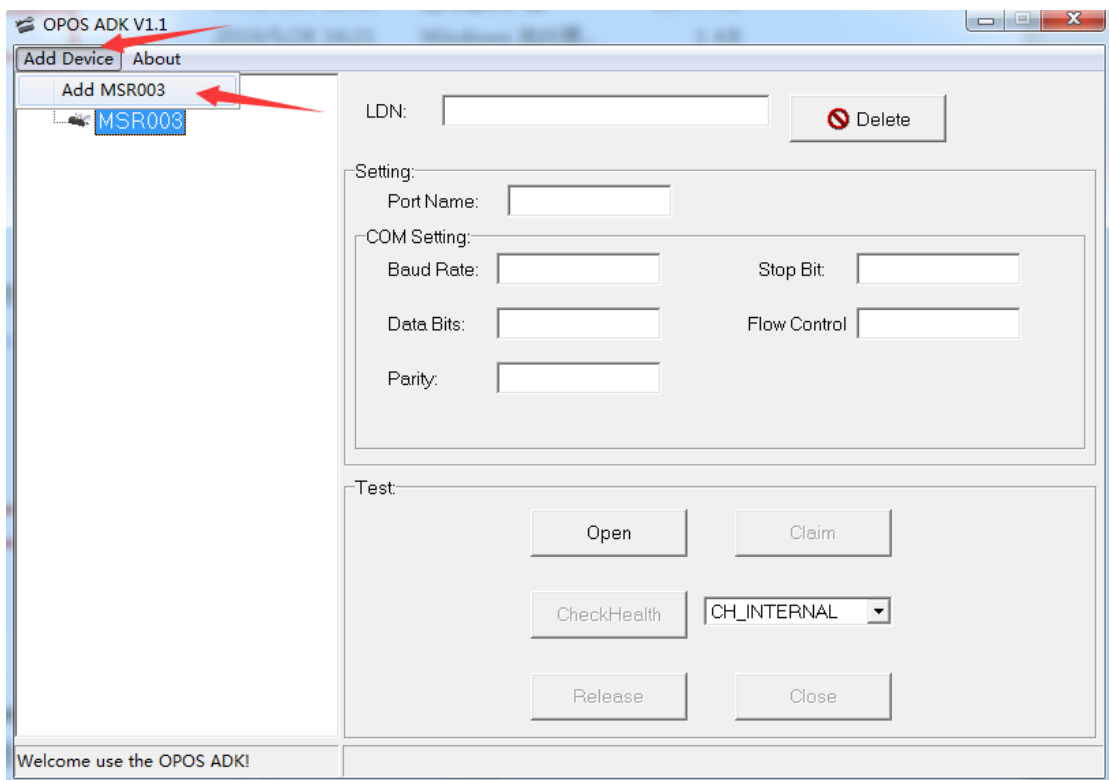
Note: If a security warning is prompted during the installation, select Agree to install.

2:Run the MSR ADK DEMO.

1>Run OPOSMSRTEST.exe.

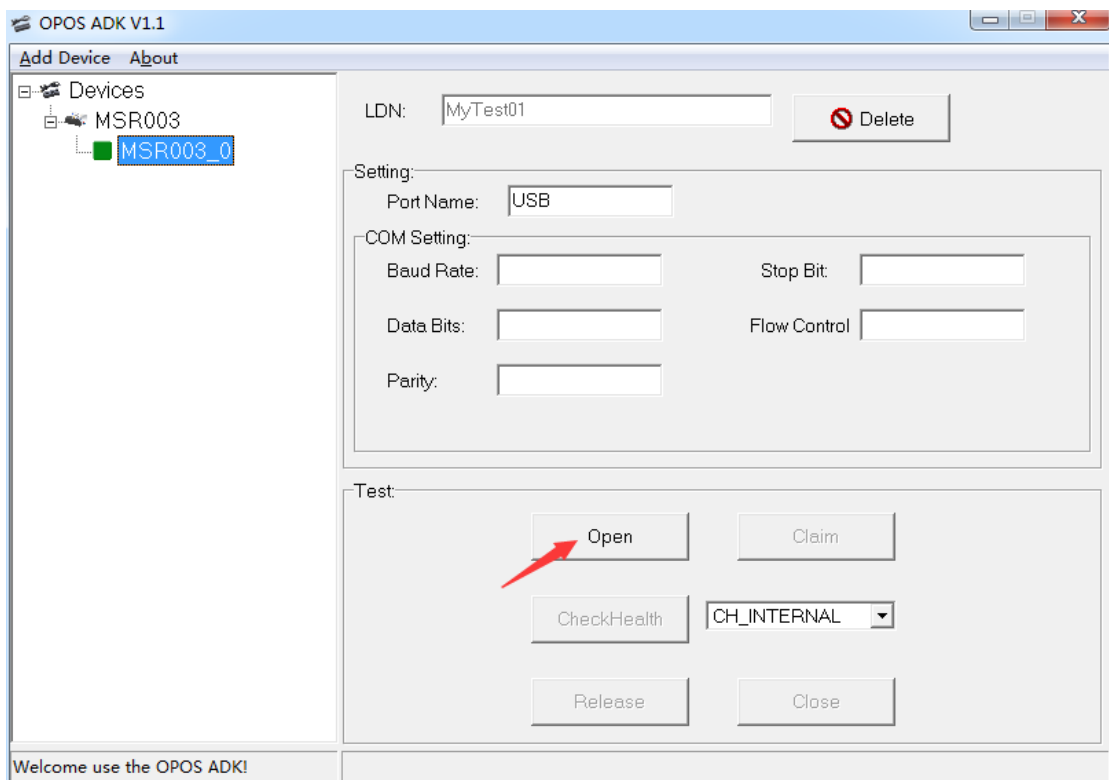
名称	修改日期	类型	大小
OposDriver.dll	2019/7/25 18:38	应用程序扩展	2,347 KB
OposInstallocx.bat	2019/5/28 16:21	Windows 批处理...	1 KB
OPOSMSR.ocx	2018/9/17 15:27	ActiveX 控件	140 KB
OPOSMSRTEST.exe	2019/7/29 14:52	应用程序	929 KB
readme.txt	2019/7/30 11:48	Text Document	1 KB

2>Add an MSR logical device.

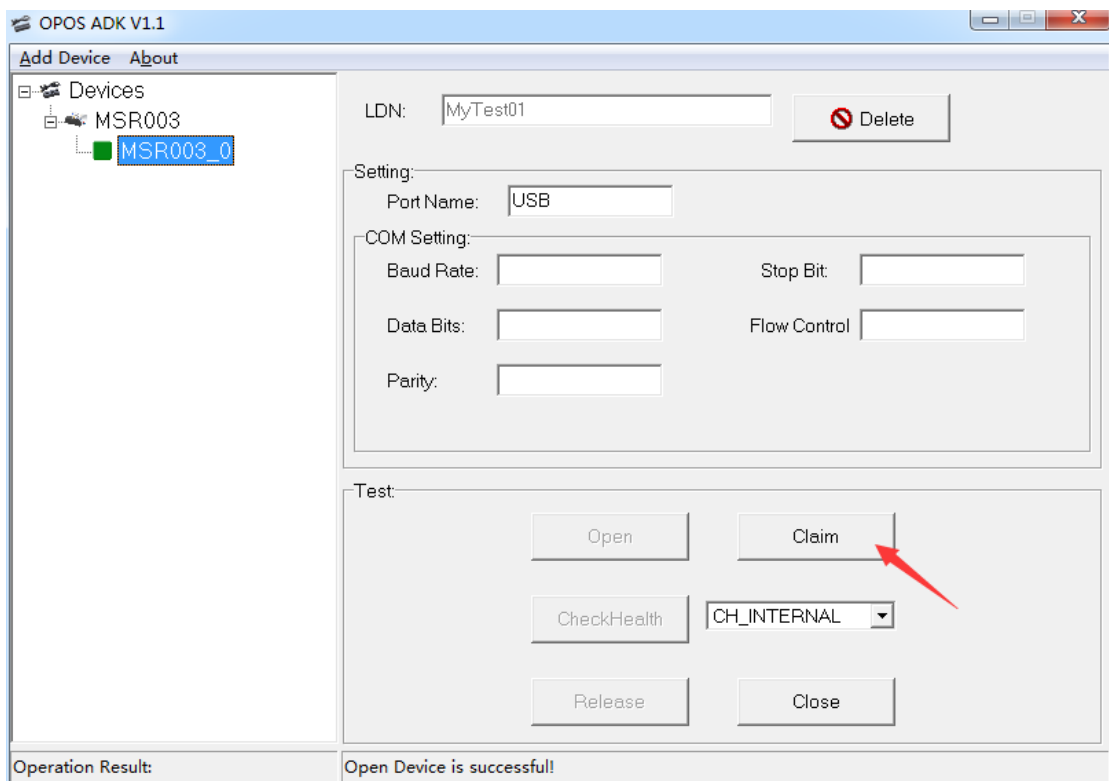


Note: LDN: Fill with your logical device name, Port Name: select USB port.

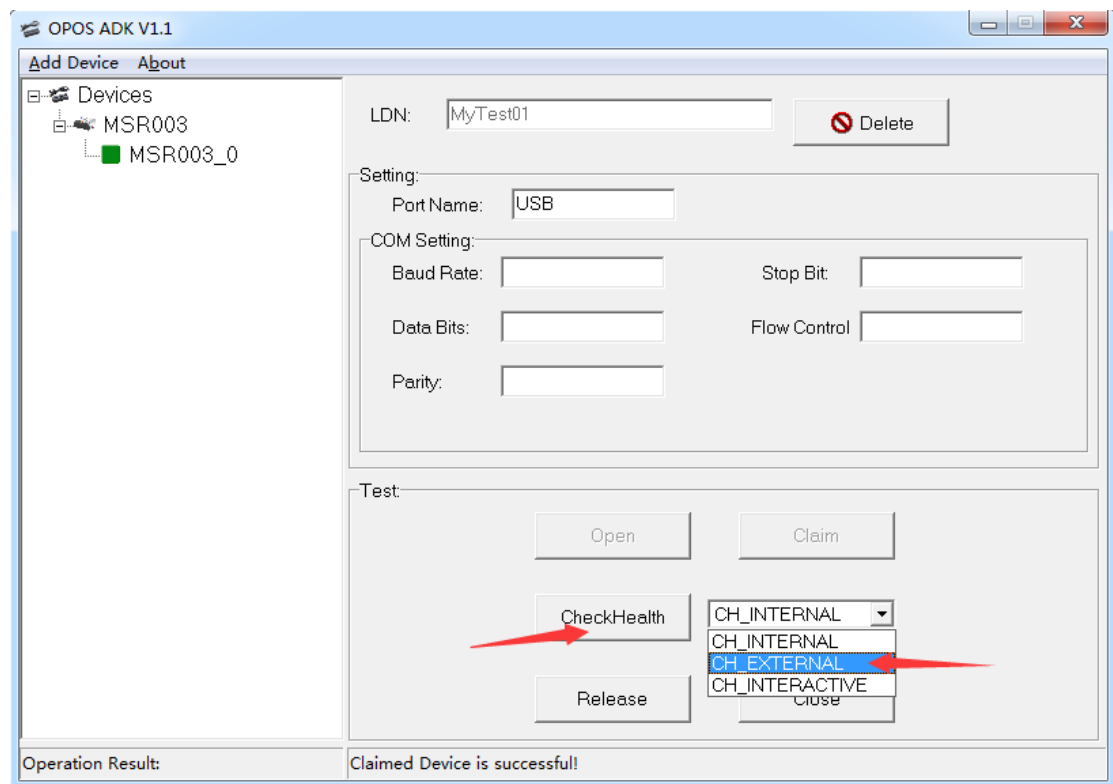
3>Open the device: select the MSR logical device and click the "Open" button.



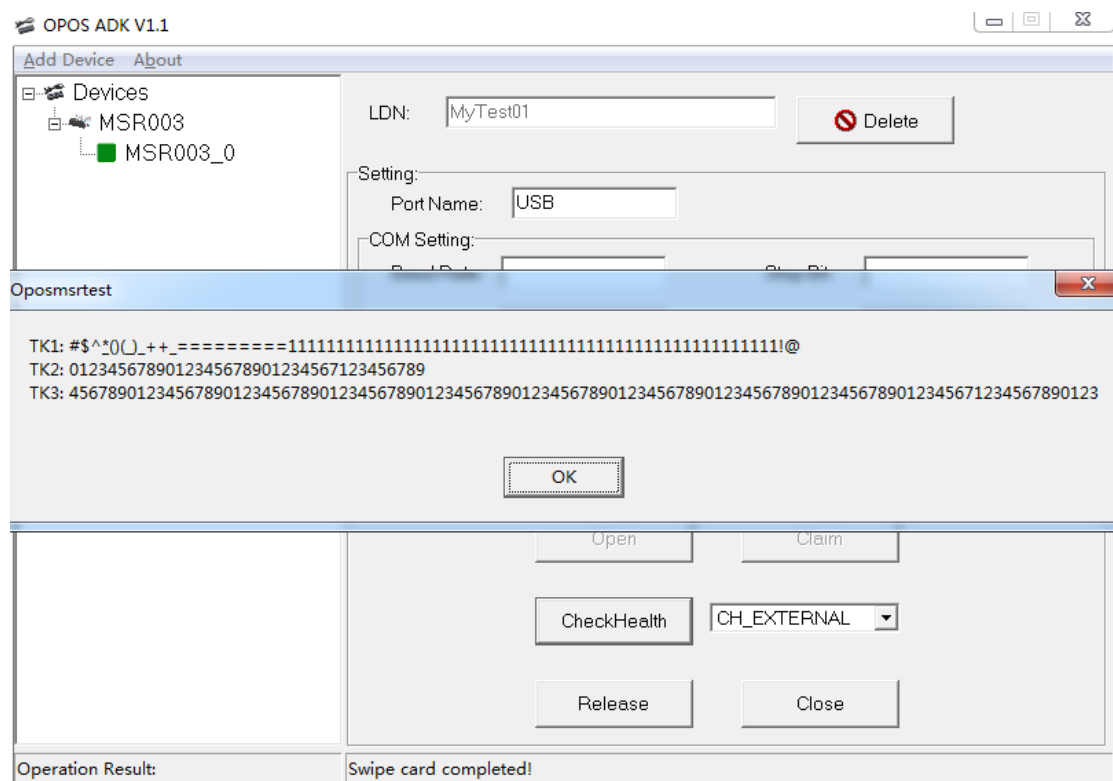
4>Claim device: click the "Claim" button.



5>Select CheckHealth Level "CH_EXTERNAL" and click the "CheckHealth" button.

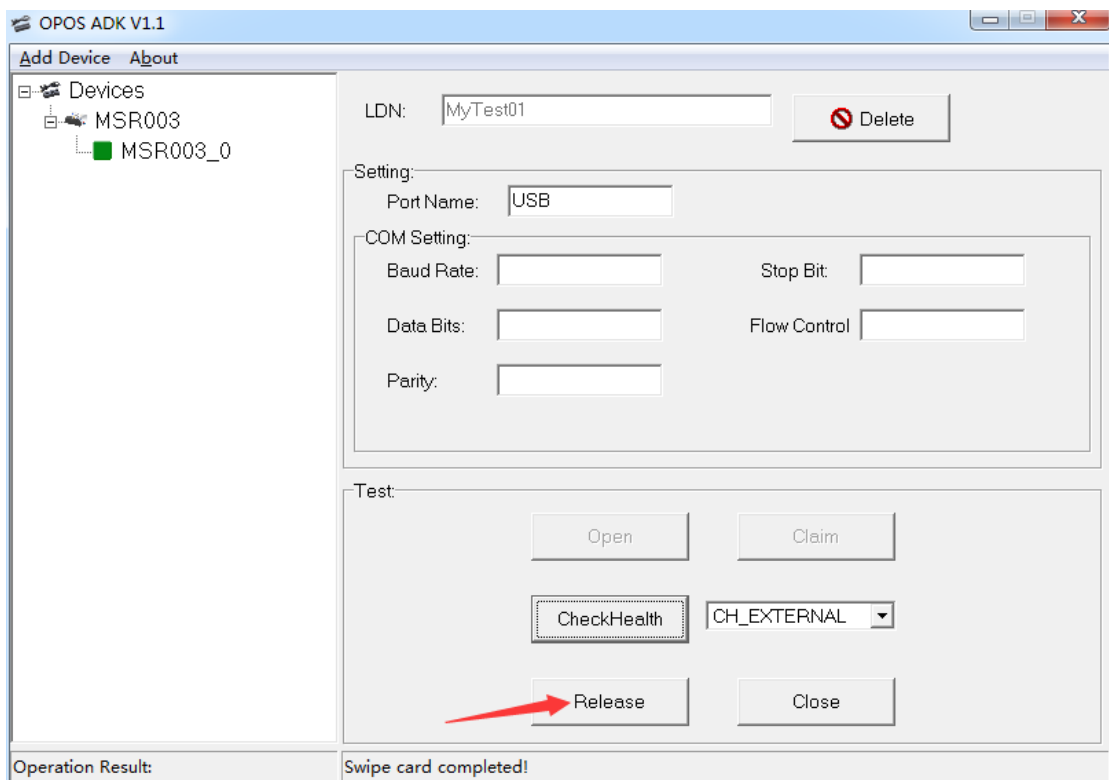


6>When swipes the card, the magnetic card data dialog box will pop up.



Note: If want to re-test the swipe card, just click the “CheckHealth” button again and then swipe the card.

7>After the test is completed, click “Release” to release the device.



8>Click the "Close" button to close the device.

