



CARDREADER

MSR003 Configurator Guide



CARDREADER MSR003

Specification

- Manual swipe (300-4000OE)
- Bi-direction readers
- Buzzer and LED indicator. Buzzer buzzing to indicate reading successfully
- Keyboard imitating output; can be collocated with computers and terminals
- Magnetic Reader conforms to: ISO 7810, 7811-1, 2, 3, 4, 5
- Coding mode: F2F (FM)
- Speed of swiping card: 10-140cm/s
- Life time of magnetic head: $\geq 500,000$ times
- Operating Voltage: DC 5V \pm 5%. Operating current: 50 mA Max
- Dimension: L90mm*W22mm*H24 mm
- Operating temperature: 0C - 40C
- Storage temperature: -20C - 60C
- Operation Humidify: 10 - 90 % RH

Data communication

- Communicate with a host computer or other terminal via a standard Universal Serial Bus (USB) interface

Data Format

- According to the requirement of the user

Certification

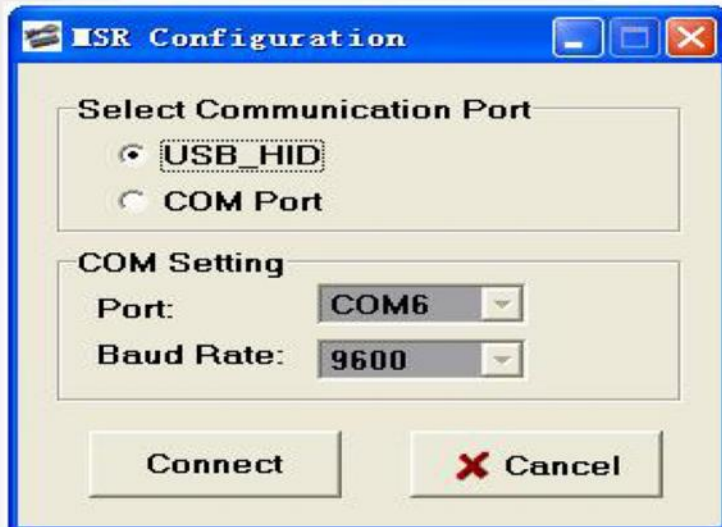
- FCC, CE

Product picture:



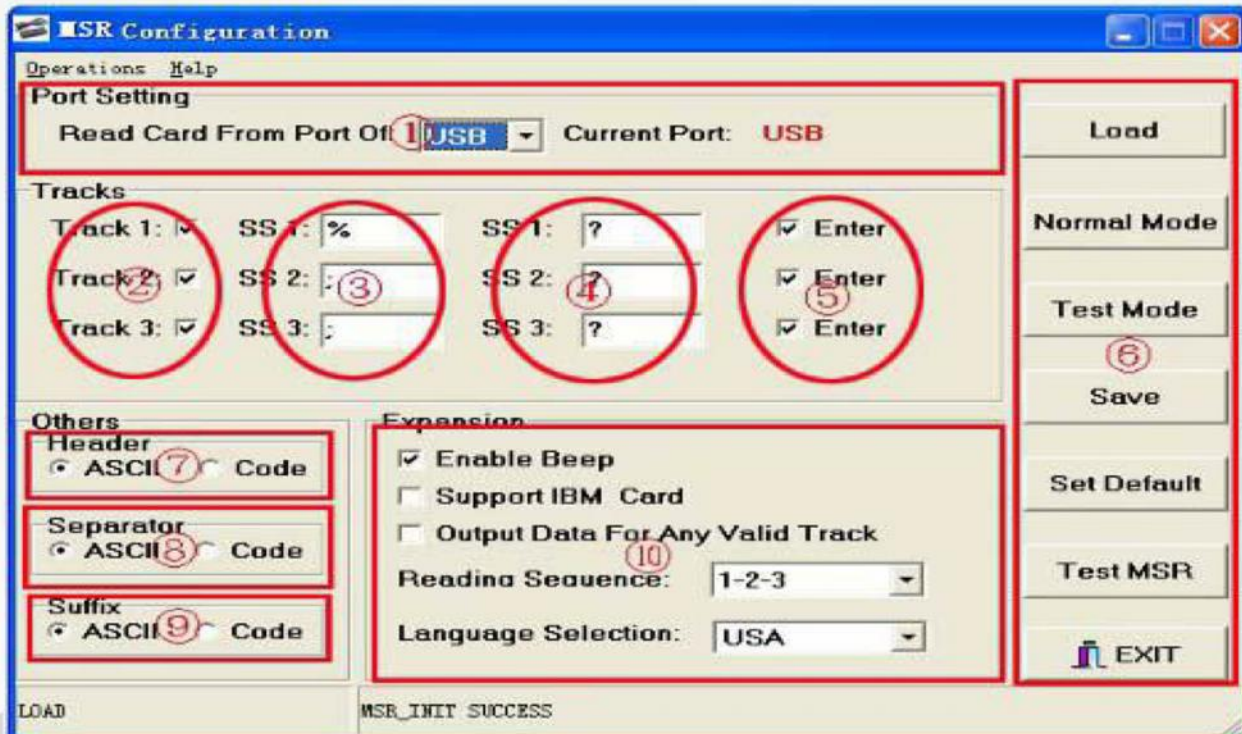
3nStar MSR003 Configurator

(→): Select Communication Port:



Select the ports of communication.

(⇒): Setting interface of MSR003:



“①”: Select the ports of communication for MSR003, and display the
Current Port of MSR003

“②”: Set the track to transmit the data

“③”: Set the track for beginning sign

“④”: Set the track for end sign

“⑤”: Set to enable or disable carriage return .

“⑥”:

“LOAD”	——Read USBMSR Data
“NORMAL MODE”	——Enter Normal Mode
“TEST MODE”	——Enter Test Mode
“SAVE”	——Save the change to USBMSR
“SET DEFAULT”	——Set USBMSR default
“Test MSR”	——Into the test interface of MSR003
“EXIT”	—— Exit

“⑦”: Set return data head (ASCII code and KEYCODE code)

“⑧”: Set return data mid-feather mark (ASCII code and KEYCODE code)

“⑨”: Set return data end (ASCII code and KEYCODE code)

“⑩”:

“Enable Beep”	——Turn Beep on or off
“Reading Sequence”	——Read track sequence
“Support IBM Card”	——Support IBM card
“Output Data For Any Valid Track”	——Verify the track data valid
“Language Selection”	——Select the current system used language