



TRM 006



Table of Contents

Chapter I: Overview	2
1.1 Safety Information	2
1.2 Electromagnetic Compatibility Statement	3
Chapter II: Installation Guide	3
2.1 Appearance of TRM006 Touch Screen Monitor:	4
2.2 The Rear Panel I/O Signs and Description:	4
Key Function:	5
Chapter III: Instructions for Installation	5
3.1 Touch Screen Driver Installation:	5
Chapter IV: Common Problems and Solutions	15
No display on the screen	15
Characters look too dark or too light	15
The monitor display needs to be adjusted	15
The text on the screen is unclear or blurred	15
Touch panel doesn't respond	15

Chapter I: Overview

Dear Valued Customer,

Thank you for purchasing 3nStar products. We are committed to continuously maintaining the product quality and providing better after-sales service. In order to take full advantage of our devices, we recommend reading through this manual before the driver installation.

1.1 Safety Information

- TRM006 is fully compliant with the relevant requirements of the national standard GB/4943-2001 IT equipment security.
- Make sure the electricity meets the power requirements (such as voltage, frequency) before installation and power outlet are properly grounded.
- Lightning may damage the product. Unplug the network cable, power cable or any other conductors during lightning storms.
- Do not unplug the components and connections (except for the USB device) when the power is on.
- Do not open the cabinet of the product by a non-professional technician.
- Do not leave any item or liquid inside the product. Do not place any objects into the ventilation holes, it may cause short-circuit of the internal components and may cause fire or electric shock.
- In accordance with the national standards GB/T9813-2000 microcomputers general specification, after the computer is below the temperature of 10 ° C, place the machine in room temperature (10-35 ° C) conditions for more than two hours to avoid damage from low temperature. In the meantime, please do not remove the casing but allow the computer to restore the natural temperature. Avoid heating the unit up too fast because the computer may generate frost and condensation that might damage the electrical components.
- This unit is in strict compliance with the electrical appliance standards.
- Safe use voltage range: 100V ~ 240V & 50Hz/60Hz.
- Verify that the power outlet is available to connect to a reliable ground circuit.
- Keep the device clean, dry, away from dust, moisture and direct sunlight.
- Do not share the same power outlet with high-power consumption electrical devices. Keep distance from high level magnetic interference.
- Turn off the power to the monitor after use to extend useful life.

- Do not use sharp points with, draw on or cut the touch screen to ensure a normal life cycle.
- Switch off the power supply before plugging in or unplugging the communication cable or connecting to an external device.
- Unauthorized and unqualified technicians should not open the machine, or they assume all risks and may damage the unit.

When any of the following occurs:

- Liquid penetrates into the body of the monitor
- Monitor is accidentally damaged
- Monitor produces a burning smell
- Monitor display is suddenly abnormal or distorted

!!! Disconnect the power supply immediately, unplug the power cord and contact a qualified service technician to service the unit.

1.2 Electromagnetic Compatibility Statement

- TRM006 is fully compliant with the relevant requirements of the national standards (GB/9254-1998) “The limits and measurement methods of radio disturbance characteristics of information technology equipment” for Class B products.
- TRM006 is fully compliant with the relevant requirements of the People's Republic of China’s national standards of (GB/17625.1-2003) “Electromagnetic Compatibility Limits for harmonic current emission limits” for Class B products.

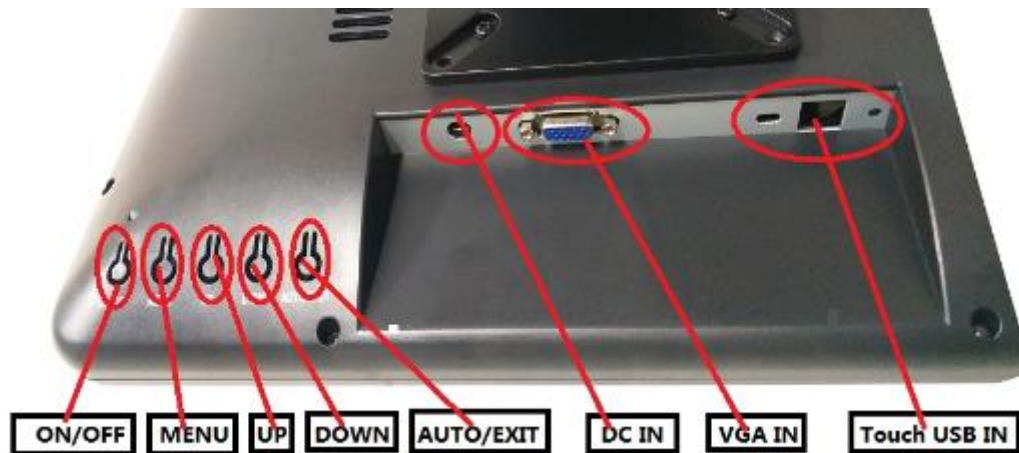
Chapter II: Installation Guide

2.1 Appearance of TRM006 Touch Screen Monitor:



2.2 The Rear Panel I/O Signs and Description:

A row of the external device connection interface is located at the rear bottom panel of the monitor, such as: power outlet, Line in, VGA and USB interface, detailed as follows:



- TOUCH USB: this is connected to PC's USB Ports, used for touch function
- DC In: 12V DC in, power supply for the touch monitor.
- VGA In: This is connected to PC's VGA output port.

Key Function:

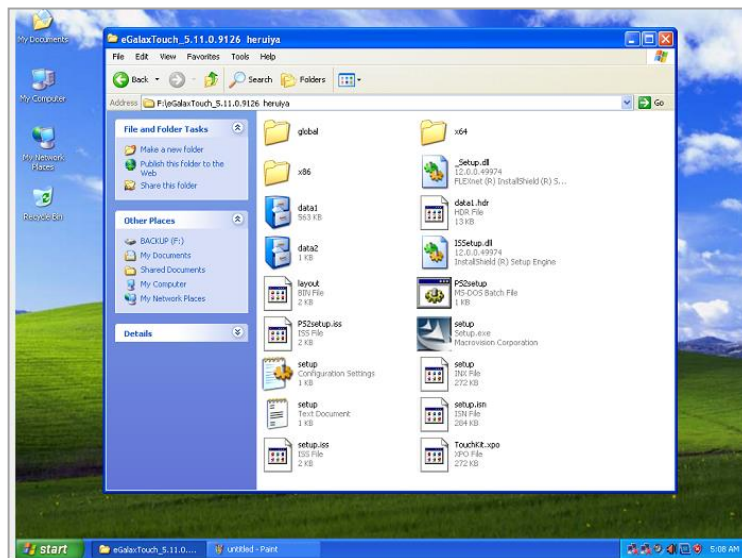
- Menu: Press this button to get a pop-up OSD menu, and enter the menu item (function) highlighted while the OSD menu is activated.
- ON/OFF: Turn the LCD power on and off. When the power is on, the light is showing green, stand by will be red
- UP: Press this button to increase the value of the function selected or move to the previous function
- Down: Press this button to decrease the value of the function selected or move to the previous function
- AUTO/EXIT: Press this button to apply the monitor setting automatically and Exit the OSD menu

TRM006 touch screen monitor uses a manual handle design which is able to be adjusted within the range of 0 degrees to 90 degrees to make operation and viewing more comfortable.

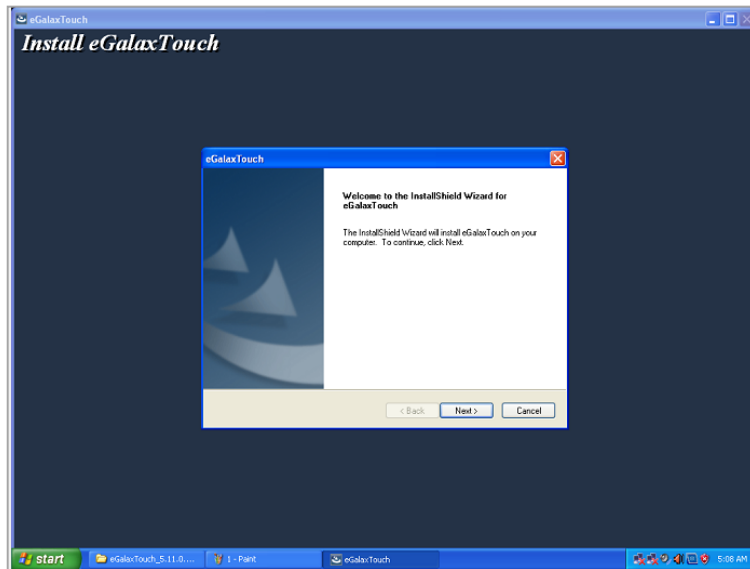
Chapter III: Instructions for Installation

3.1 Touch Screen Driver Installation:

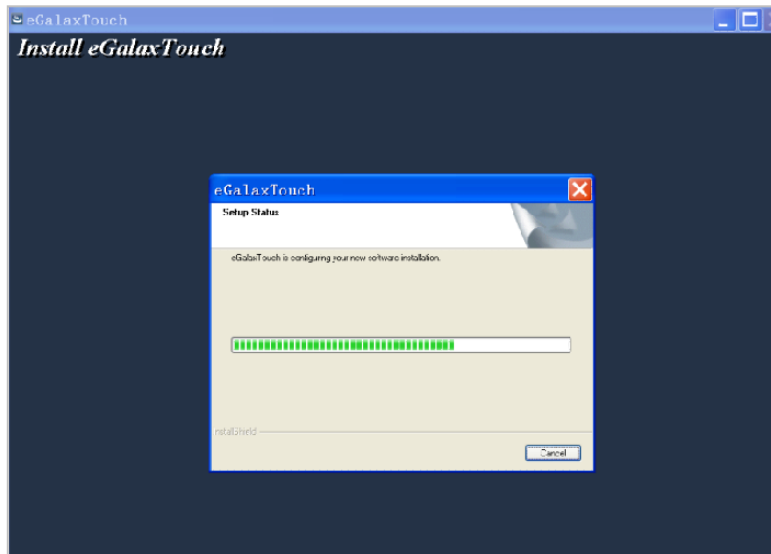
Step 1: Open the installer directory on the CD, double-click “Setup.exe”



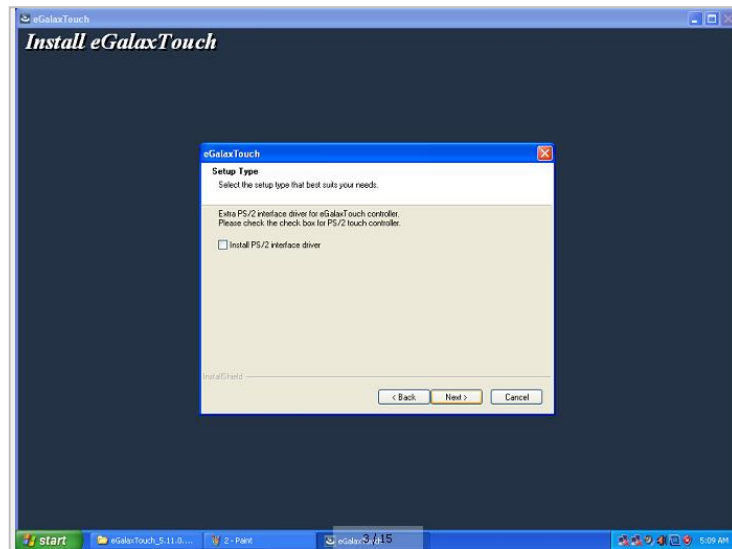
Step 2: Installation begins as the following figure shows. Click Next to proceed to the next step.



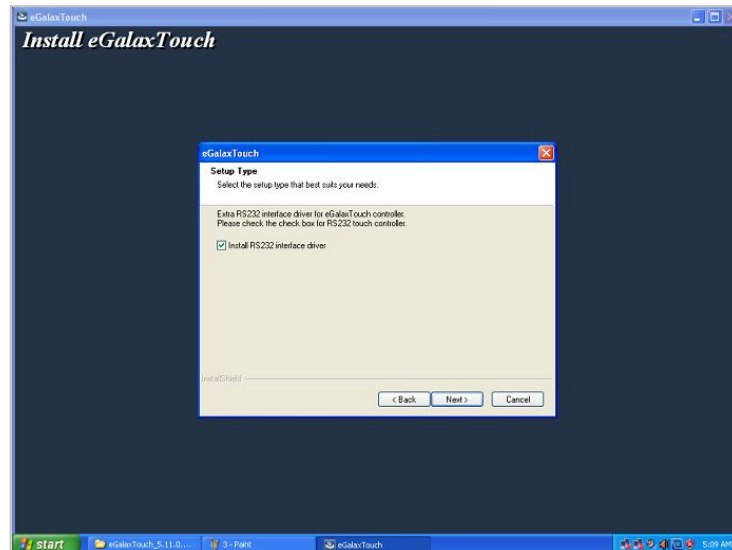
Step 3: Installation in progress



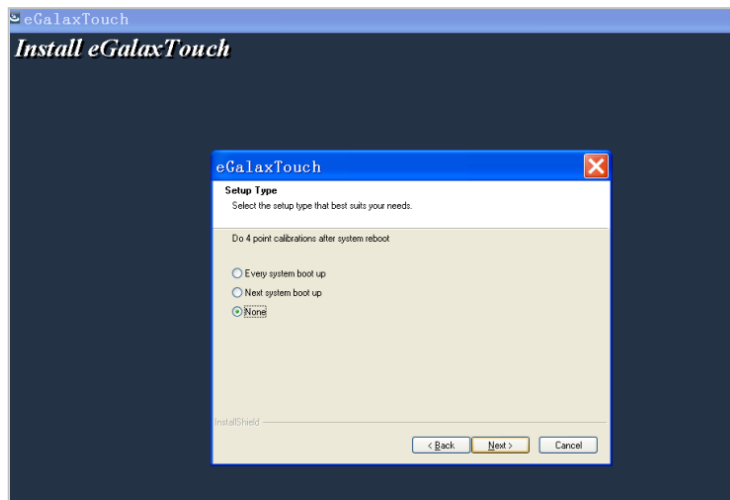
Step 4: Click “Install PS/2 interface driver” and click “Next” to proceed with the installation.



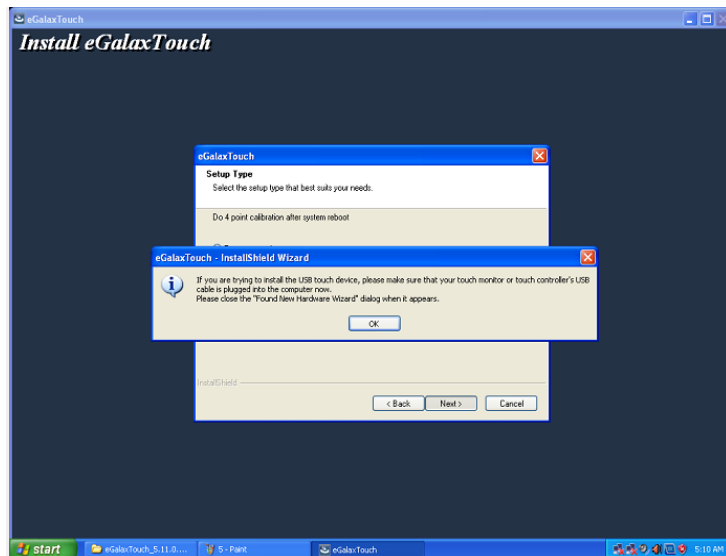
Step 5: For the touch interface RS232, click “Install RS232 interface driver” and click “Next” to proceed with the installation.



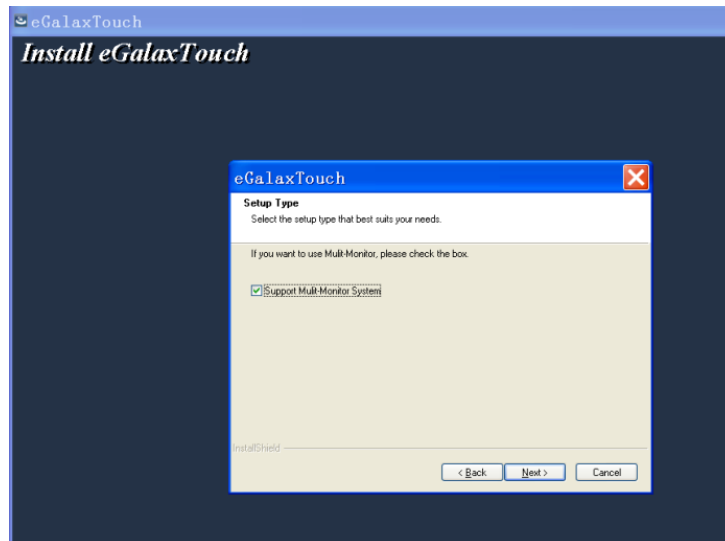
Step 6: When choosing the calibrations, select NONE and click “Next” to proceed with the installation.



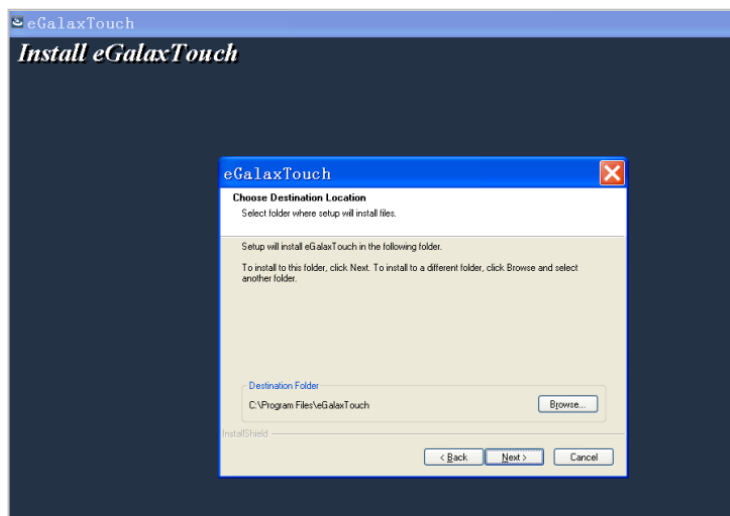
Step 7: When installing USB touch, please connect the USB controller and USB cable.



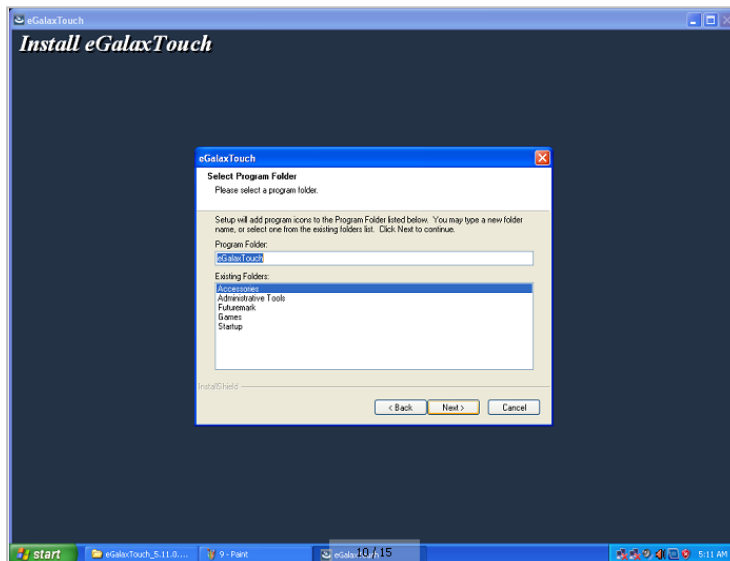
Step 8: When using two or more touch screens, please select “Support multi- monitor system”.



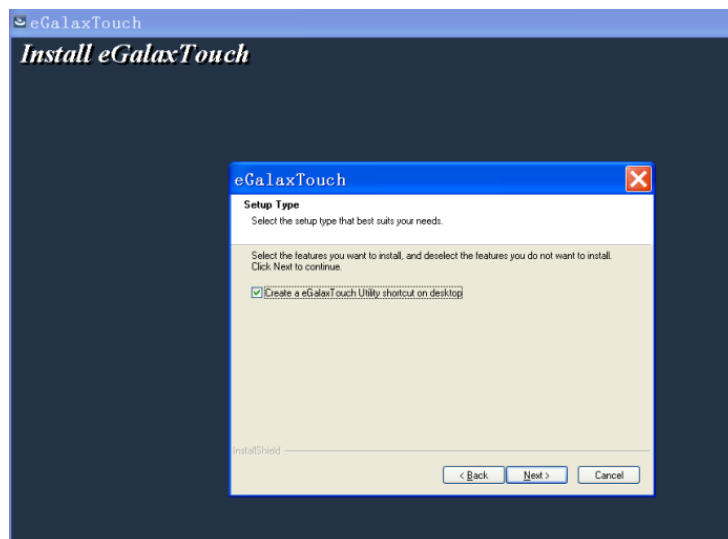
Step 9: Select the destination location to store the driver. The default path is C: \ Program Files \ eGalaxtouch. Use the default path here and click “Next” to proceed with the installation.



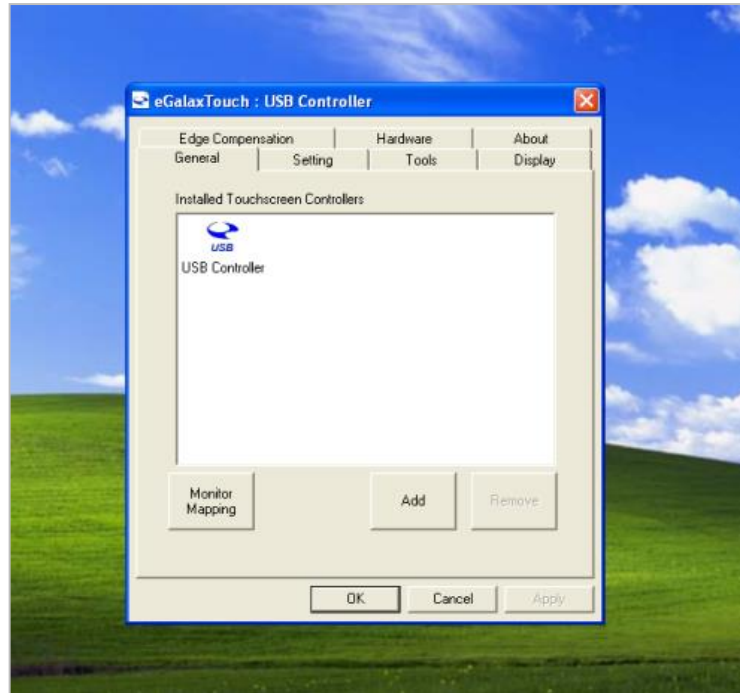
Click "Next" to proceed with the installation.



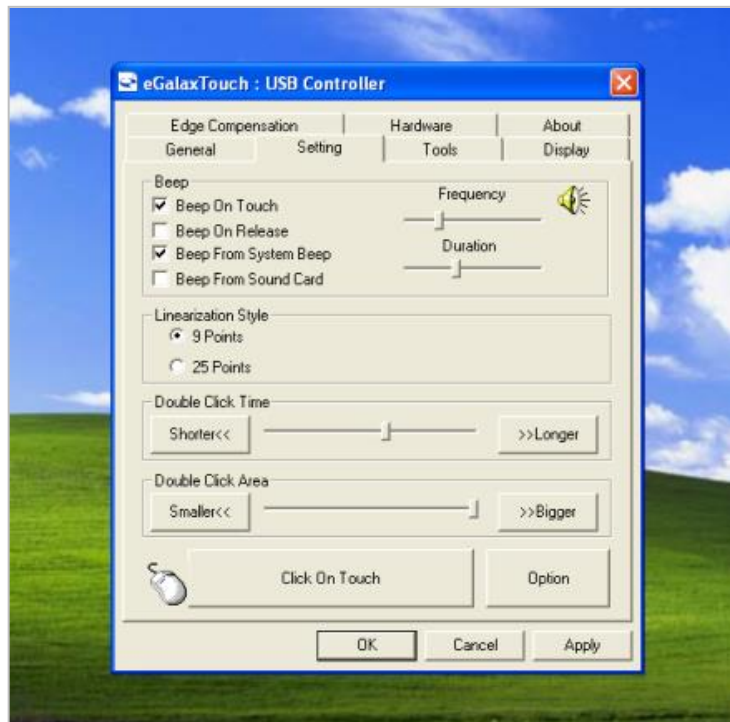
Step 10: Select the option to create a desktop shortcut icon.



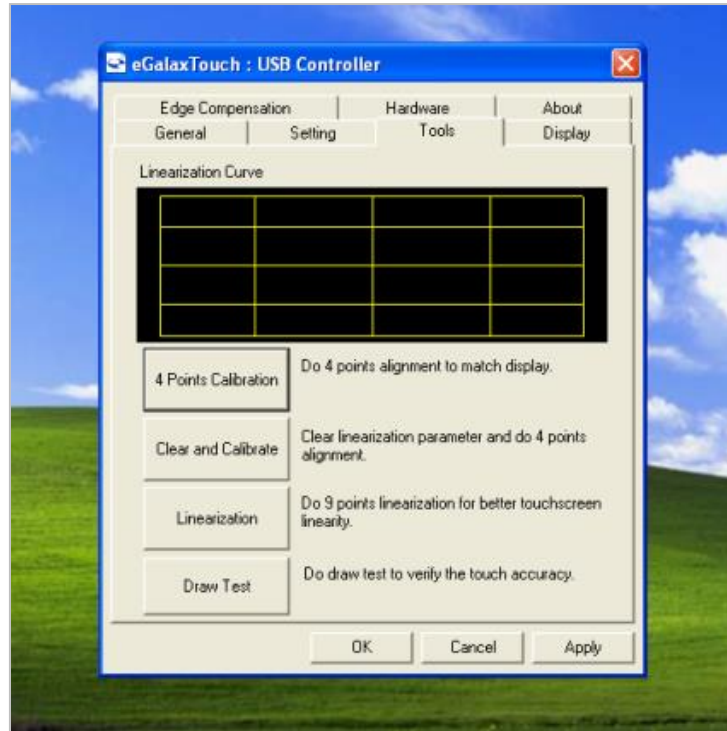
After installing the driver successfully, identify the USB controller card and RS232 control card as the following two figures show:



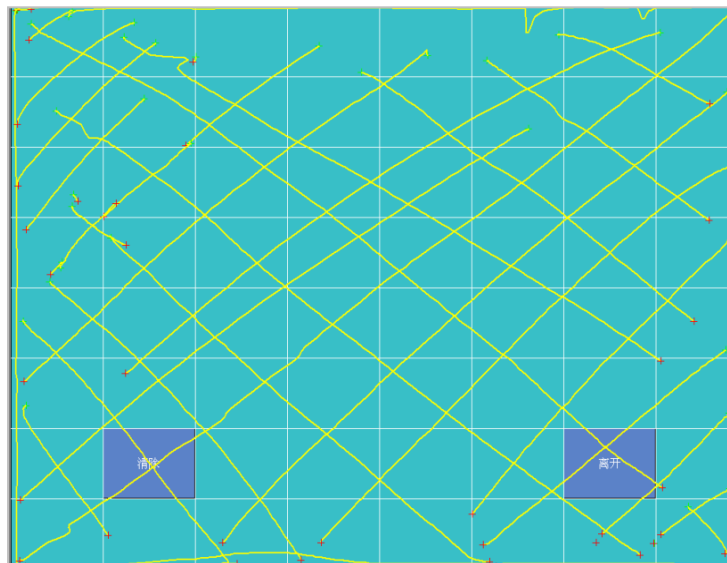
Related touch function setting



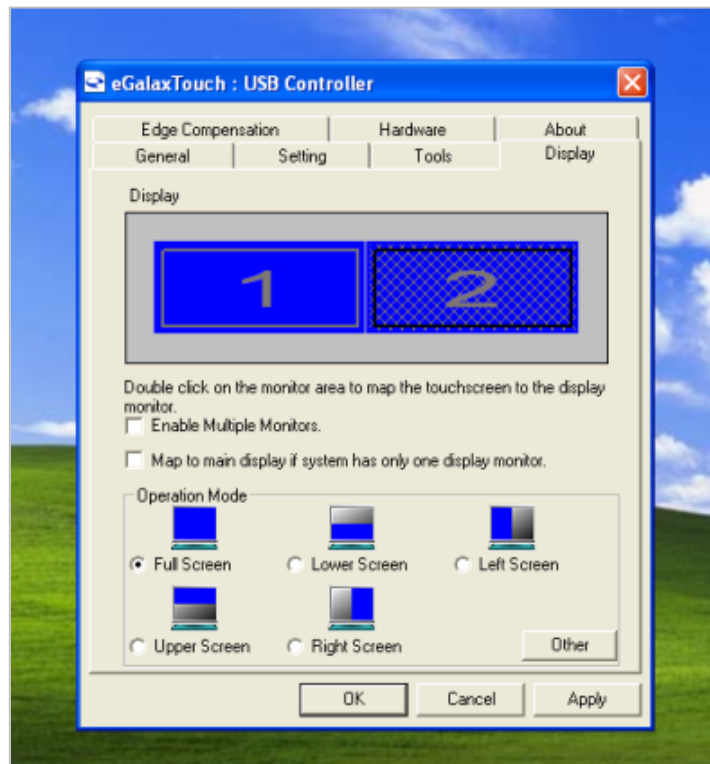
Touch calibration



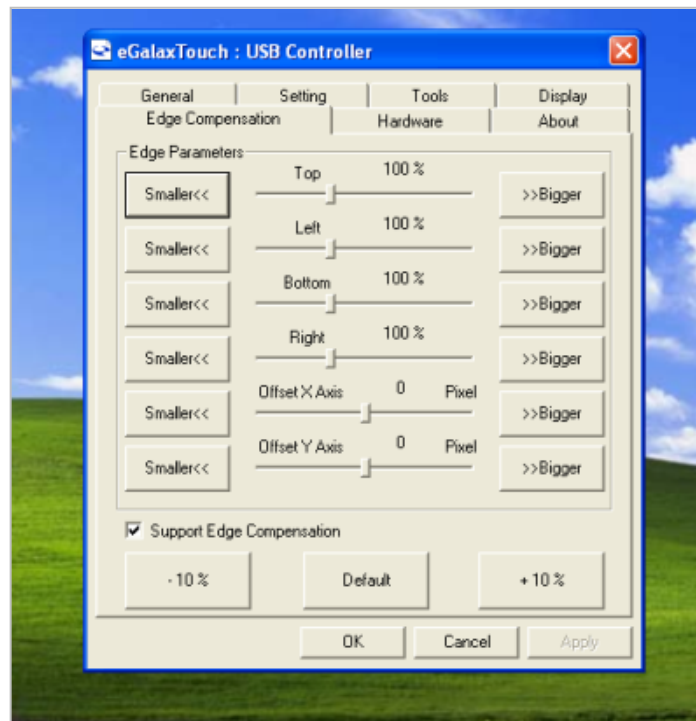
Touch device line test



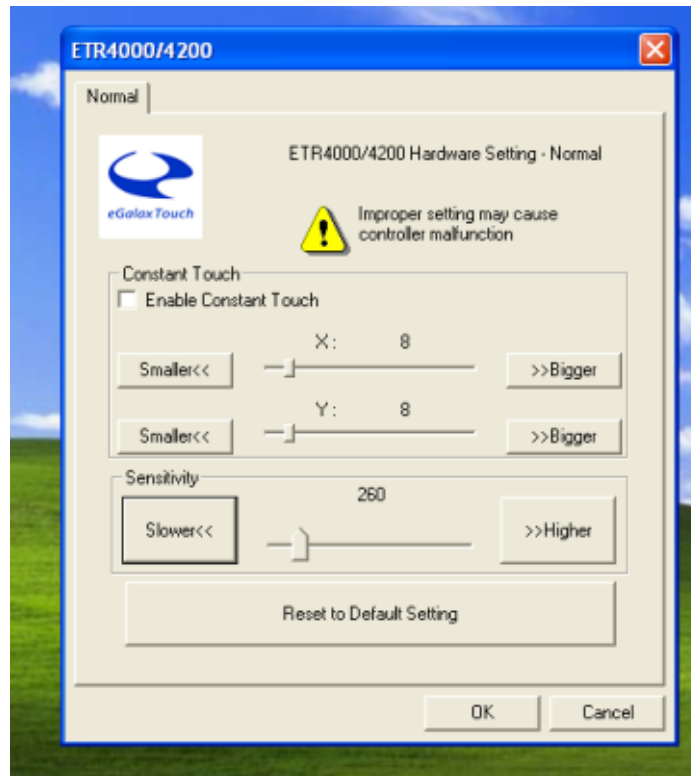
Touch screen settings



Touch device edge correction settings



Touch device hardware information display



Chapter IV: Common Problems and Solutions

No display on the screen

- *Power saving mode is on, press any key on the keyboard or move the mouse to activate.*
- *The pins of the VGA cable connector are bent or lost contact to the VGA interface. Change the VGA cable. If the problem still persists, bring the unit to an authorized service provider.*

Characters look too dark or too light

Use the OSD Menu to adjust the brightness.

The monitor display needs to be adjusted

The resolution frequency should be changed.

The text on the screen is unclear or blurred

Make sure the resolution or refresh rate are compatible with the Display Mode.

Touch panel doesn't respond

Make sure the touch screen driver is installed properly into your PC system and calibration is done.

Thank you very much for using this 3nStar product.