

**RPT005
INDUSTRIAL PC
USER MANUAL**



RPT005



Attention:

- Place printer on a stable surface. Choose a firm, level surface that is free from vibration.
- Don't use the printer in an environment with high temperature, high humidity or poor air quality.
- Connect the power adapter to a properly grounded receptacle. Avoid using the same power socket with other high energy consumption devices to avoid power fluctuations.
- Keep water and other liquid from going into the printer. If this happens, turn the unit off immediately.
- Attempting to print without a paper roll will seriously damage the print head.
- Unplug the printer from the power receptacle if it is not going to be used for a long time.
- Only use approved accessories. Never attempt to disassemble, repair or modify the unit.
- Use a standard grounded power adapter.
- Use high quality paper to ensure the printing quality and the life of the printer.
- Turn off the power to the unit before plugging in or unplugging the cable.
- Printer should only be used at altitudes below 5,000 meters.

Applications

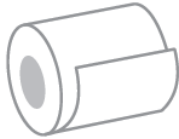
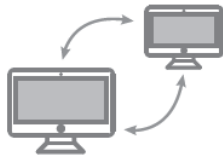
- POS system
- EFT POS system
- Gym, retail, civilian aviation
- Inquiry service system
- Instrument test
- Tax and accounting

Packing

User Manual	1 Piece
Printer	1 Piece
Serial & USB Power cable	1 Piece
Power adapter (24 V)	1 Set
Paper roll	1 Roll
CD with Drivers/Software	

Features

- 80mm large capacity paper housing
- High speed text and graphics printing
- Excellent, high-quality print performance
- Easy to control printer functions and status with print monitor
- Error alerts
- Receipt printing alarm and error messages
- Supports Linux and high-speed printing modes
- Supports black mark and printing error detection
- Supports 256kb NV logo download store and printing
- USB + Serial interface
- Quality sealed mechanism and printer with long lifespan
- Supports Chinese GB18030
- Multiple international language options.
- Simplified/traditional Chinese language options
- Built-in web page allows for printer setup directly with IE port
- intelligent cutter design system to avoid cutter jam error
- Thermal print head protection system design
- USB number fix function
- Virtual COM function
- Completed SDK & driver available

Avoid order missing**High printing speed****Support QR Code printing****Support network printing****Support OPOS driver****Support international languages**

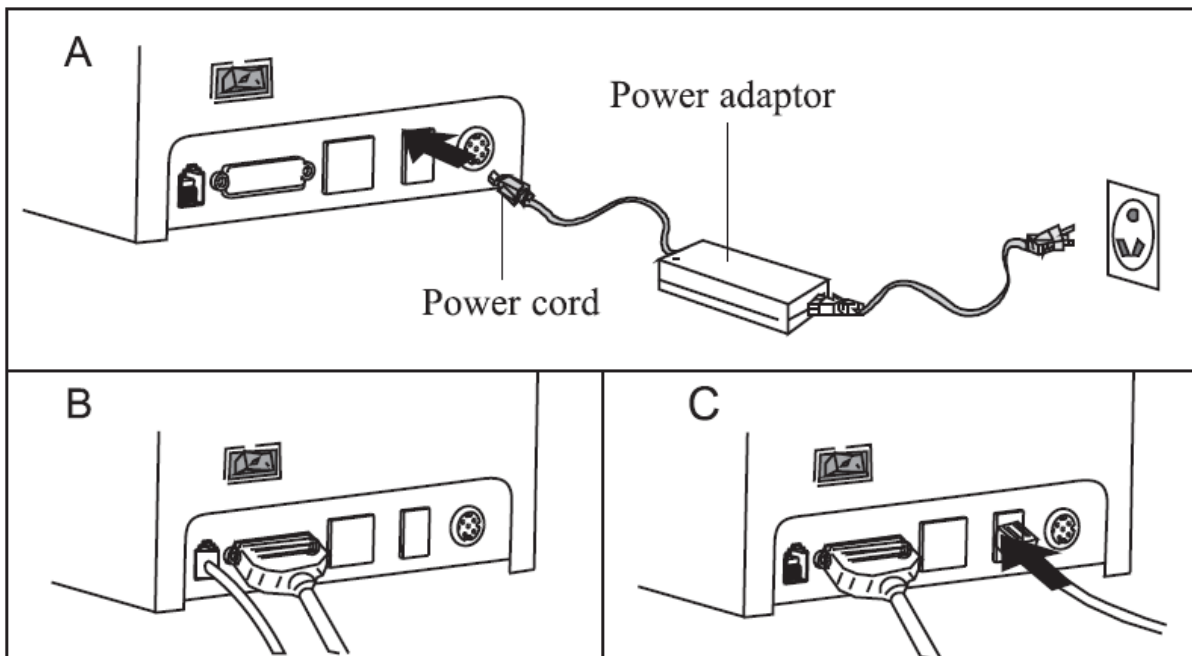
Specification

Printing method	Direct thermal
Black mark detection	Supported
Roll paper size	79.5mm +/- 0.5mm
Column capacity	576 dots/line or 512 dots/line
Character size	ANK Font A: 12x24 dots Font B: 9x17 dots Simplified/traditional Chinese: 24x24
Command	Compatible with ESC/POS
Interface (optional)	USB+Serial
Auto cutter	Full or Partial (optional)
Reliability	Printing head life - 100 km
Barcode	UPC-A/UPC-E /JAN13(EAN13)/JAN8(EAN8)/CODE39 /ITF/CODABAR/CODE93/CODE128
NV flash	256k bytes
Input buffer	2048k bytes
Paper thickness	0.06-0.08 mm

Adaptor input voltage	AC 100V/220V, 50-60 Hz
Power supply	DC 24V-2.5A
Printer input voltage	DC 24V-2.5A
Cash drawer control	DC 24V-1A
Working environment	Temp. (0-45°C, humidity (10-80%))
Storage environment	Temp. (-10-60°C, humidity (10-90%))
Drivers	Win9X/Win 2000/Win 2003/Win XP/Win7/Win 8/Win 8.1/Win 10/Linux

Connection

1. Connect AC power cord to power outlet, connect DC power cord to printer.
2. Connect the printer to the computer.
3. Connect cash drawer to the printer.

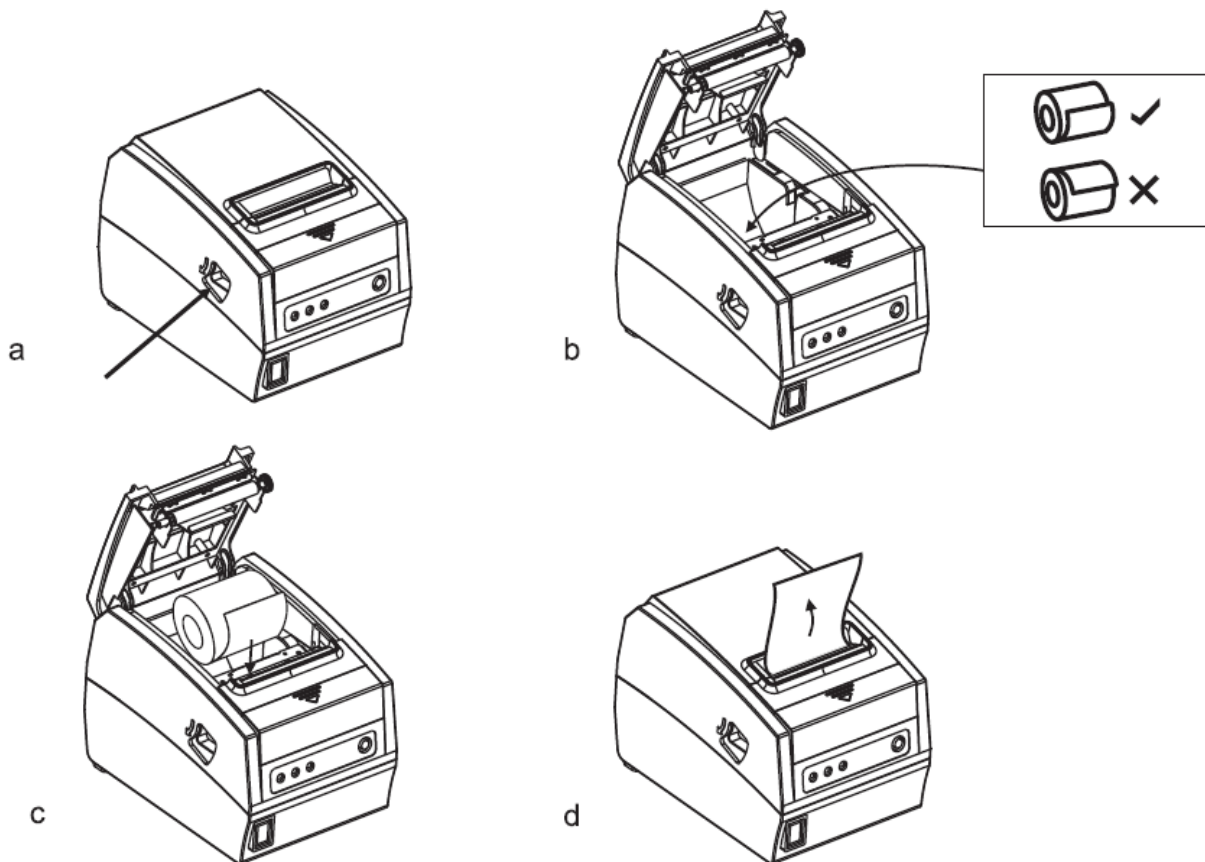


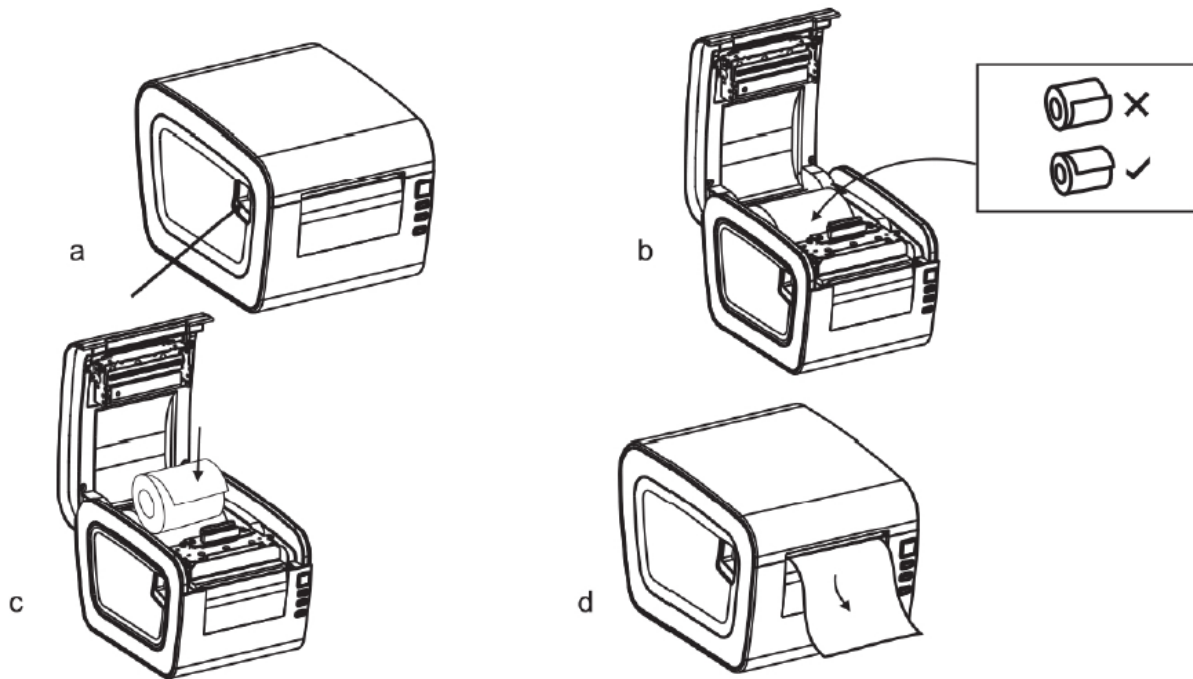
Paper Roll Loading

80mm thermal paper roll is recommended for 80mm series printers.

Loading paper into the printer:

1. Open top cover
2. Drop paper roll into slot indicated in (b).
3. Pull the paper roll into the paper holder (c).
4. Print one self-test to make sure paper is correctly installed.





Button Name with LED light and function

1. **FEED button.** Press to feed paper manually.
2. **POWER indicator.** Light on means connected properly. Blue and red light means paper low.
3. **ERROR button.** Alarm is indicated with out of paper, cutter error or print head overheating.

Self Test

When printer is turned on, turn it off. Press "FEED" button and turn on the power at the same time. After two (2) seconds, release the FEED button, and a completed self-test should print out to show printer settings.

Hexadecimal mode

When printer is turned on, turn it off. Press "FEED" button and turn on the power at the same time. After ten (10) seconds, release the FEED button to enter hex dump mode. The print out will show the Hexadecimal Dump.

Reset

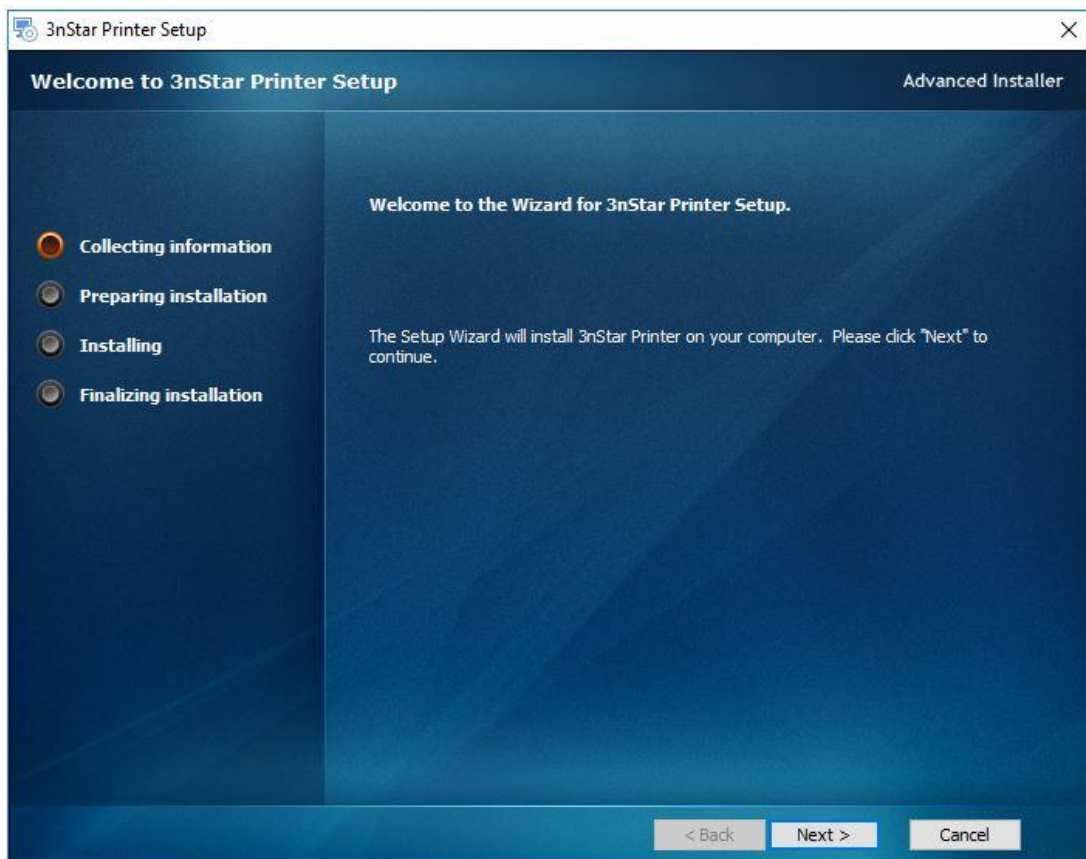
When printer is turned on, turn it off. Press "FEED" button and turn on the power at the same time. After twenty (20) seconds, release the FEED button, reset is successful if a beep is heard.

Driver installation

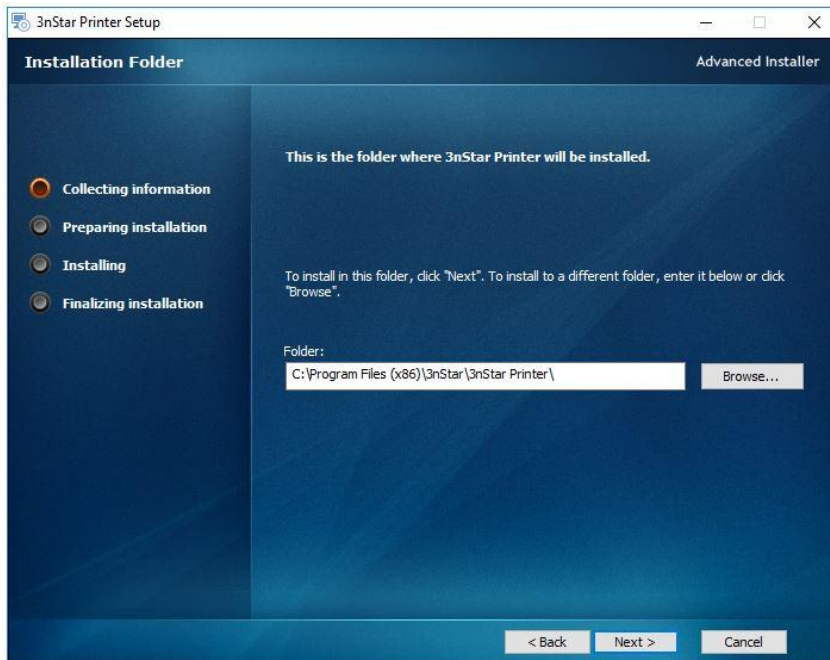
- 1) Install driver and print through Win OS.
- 2) Printing via port directly.

Install driver under WINDOWS OS (Steps listed below):

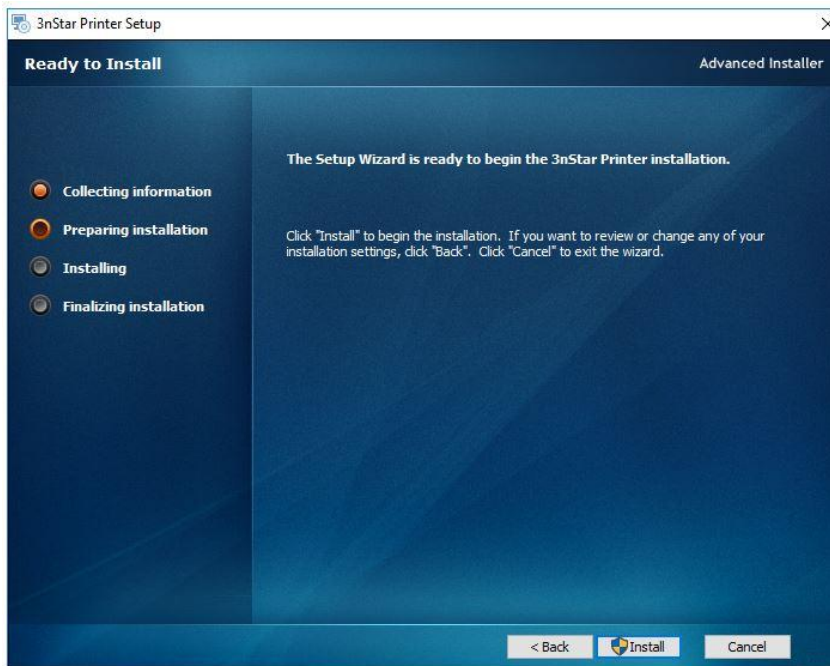
1. Double-click driver icon for printer set-up



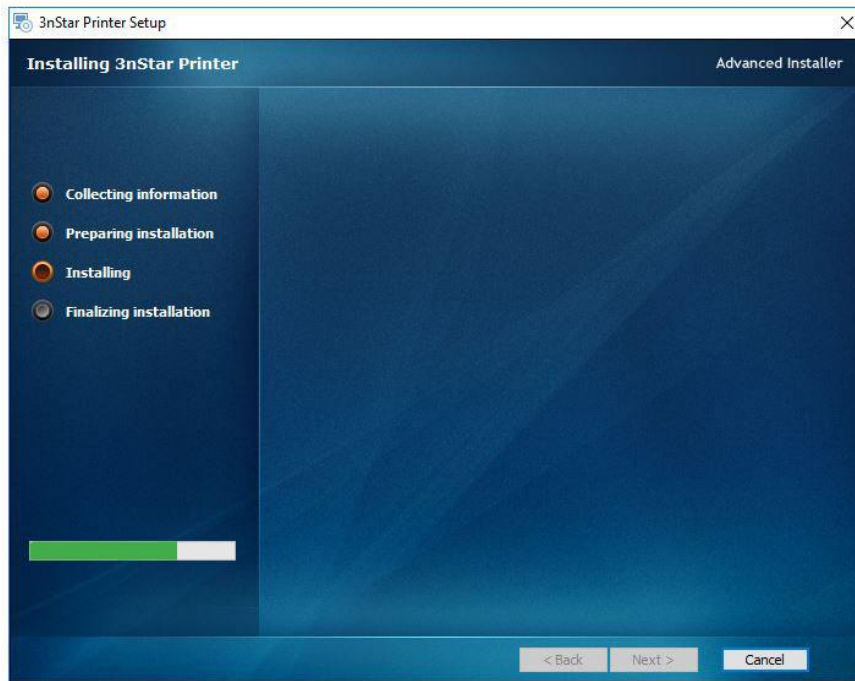
2. Select folder where application will be installed



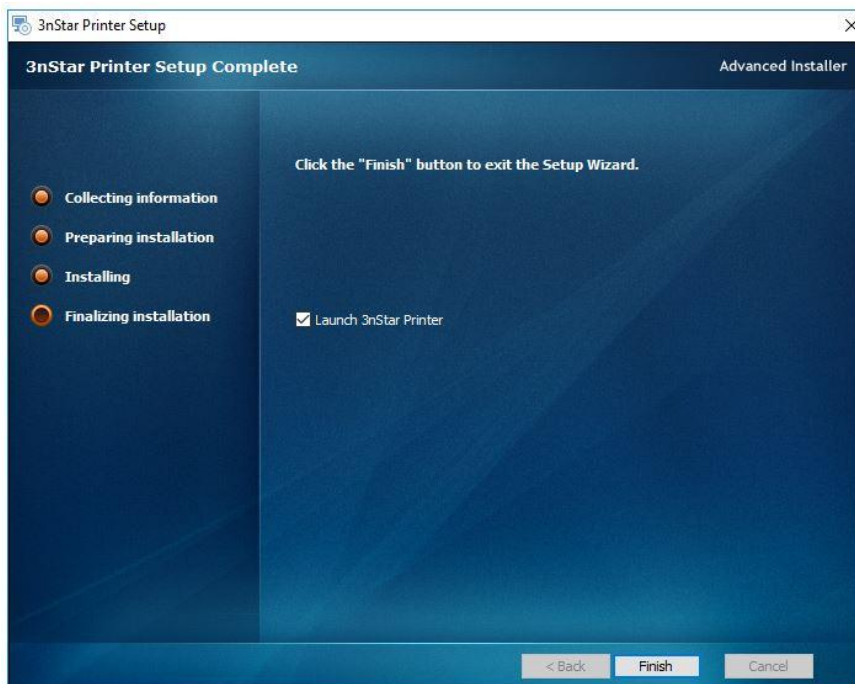
3. Click "Install" to begin the installation



4. The installation process will update the status



5. Click "Finish" to complete the installation



Choose "POS-80C" from the Install Configuration

Install Configuration [X]

You are using Windows 10 x64 OS.
Please select Windows 10 to install.

Select Windows OS

- Windows XP
- Windows Vista
- Windows 2003
- Windows 8/8.1
- Windows 7
- Windows 10

Printer Interface : USB Other

Select Printer Series

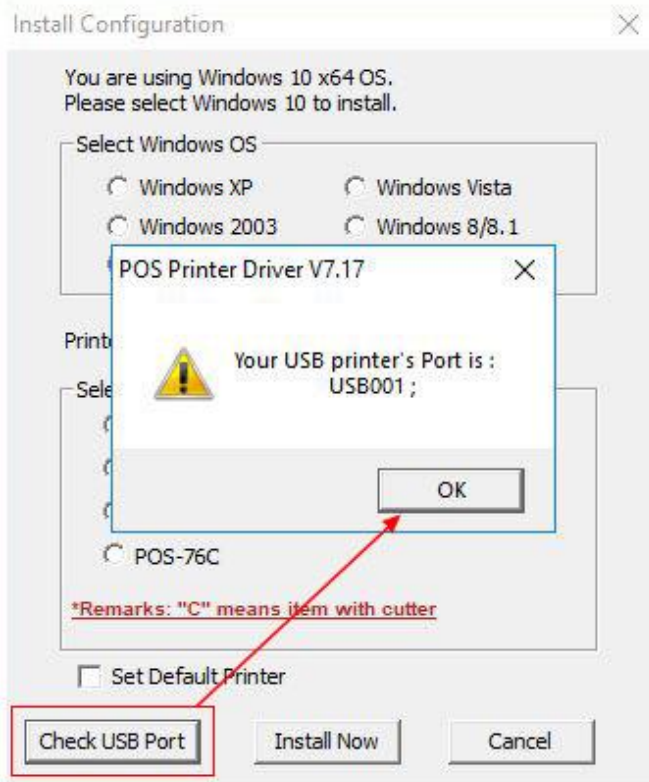
- POS-58
- POS-58C
- POS-80
- POS-80C
- POS-90
- POS-76
- POS-76C

*Remarks: "C" means item with cutter

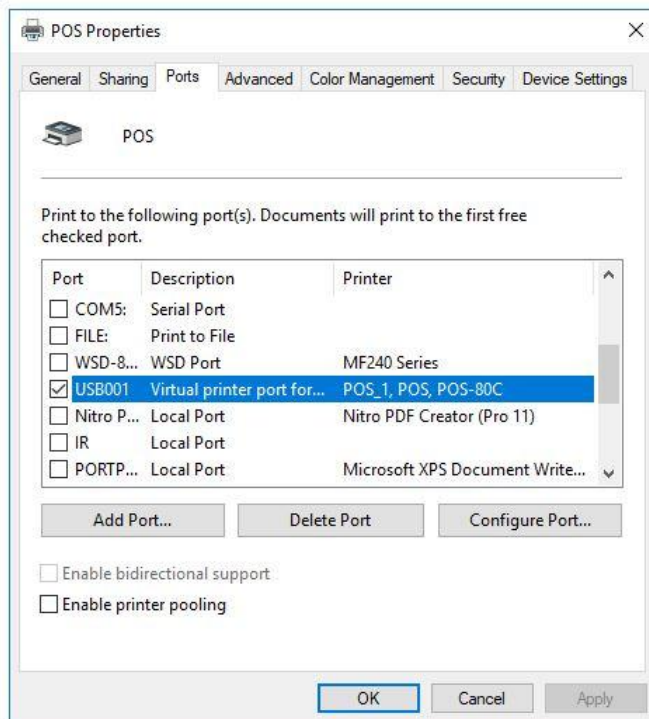
Set Default Printer

Check USB Port Install Now Cancel

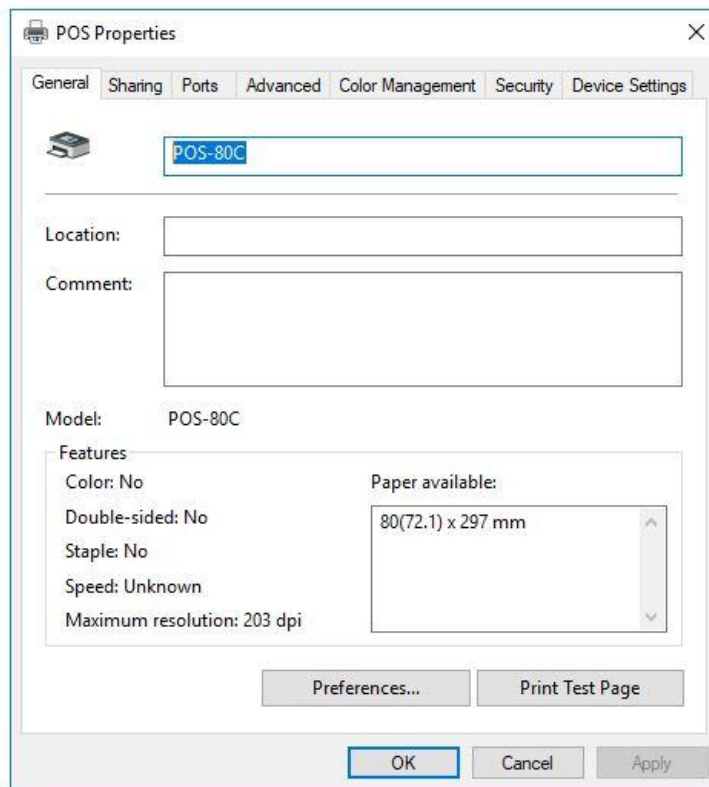
Select "Check USB Port" for POS Printer Driver



Choose "USB001" in the POS Properties Control Panel



Select "General" tab and print test page



Printing directly via port:

- Does not require installation of printer driver. Choose directly at appropriate port (i.e., USB, Serial) in software.
- Printing via port uses commands to control printer
- ESC/POS commands are integrated directly

Clearance issues

Clean printing head if any of the following occur:

1. Printing is blurred or unclear
2. Vertical columns blurred or unclear
3. Paper feeds noisily

Printing head cleaning steps:

1. Turn printer off, unplug the power cord.
2. Open top cover, take out paper roll.
3. Wait until printing head has cooled.
4. Clean printing head with swab and alcohol. Do not use water.
5. Close top cover until alcohol evaporates.
6. Reconnect power, turn unit on, print self test.
7. Repeat, if needed.

**NOTICE:**

- Turn power off when cleaning the unit.
- Don't touch or scratch printing head surface, roller or sensors.
- Avoid gas, acetone or organic solvents.
- Before powering unit up and printing self test, wait until alcohol has evaporated after cleaning.



Warning: No part of this manual can be changed without agreement. The company reserves the rights to modify the technology, components, software and hardware. You may ask your dealer for more product information. No part of chapter in this manual can be copied or transmitted in any format without permission.