

**RPT008
INDUSTRIAL PC
USER MANUAL**



RPT008



Attention:

- Place printer on a stable surface. Choose a firm, level surface that is free from vibration.
- Don't use the printer in an environment with high temperature, high humidity or poor air quality.
- Connect the power adapter to a properly grounded receptacle. Avoid using the same power socket with other high energy consumption devices to avoid power fluctuations.
- Keep water and other liquid from going into the printer. If this happens, turn the unit off immediately.
- Attempting to print without a paper roll will seriously damage the print head.
- Unplug the printer from the power receptacle if it is not going to be used for a long time.
- Only use approved accessories. Never attempt to disassemble, repair or modify the unit.
- Use a standard grounded power adapter.
- Use high quality paper to ensure the printing quality and the life of the printer.
- Turn off the power to the unit before plugging in or unplugging the cable.
- Printer should only be used at altitudes below 5,000 meters.

Applications

- POS system
- EFT POS system
- Gym, retail, civilian aviation
- Inquiry service system
- Instrument test
- Tax and accounting

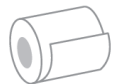
Packing

User Manual	1 Piece
Printer	1 Piece
Serial & USB Power cable	1 Piece
Power adapter (24 V)	1 Set
Paper roll	1 Roll
CD with Drivers/Software	

Features

- 80mm large capacity paper housing
- High speed text and graphics printing
- Excellent, high-quality print performance
- Easy to control printer functions and status with print monitor
- Error alerts
- Receipt printing alarm and error messages
- Supports Linux and high-speed printing modes
- Supports black mark and printing error detection
- Supports 256kb NV logo download store and printing
- USB + LAN interface
- Quality sealed mechanism and printer with long lifespan
- Supports Chinese GB18030
- Multiple international language options.
- Simplified/traditional Chinese language options
- Built-in web page allows for printer setup directly with IE port
- intelligent cutter design system to avoid cutter jam error
- Thermal print head protection system design
- USB number fix function
- Virtual COM function
- Completed SDK & driver available

Avoid order missing



High printing speed



Support QR Code printing



Support network printing



Support OPOS driver



Support international languages

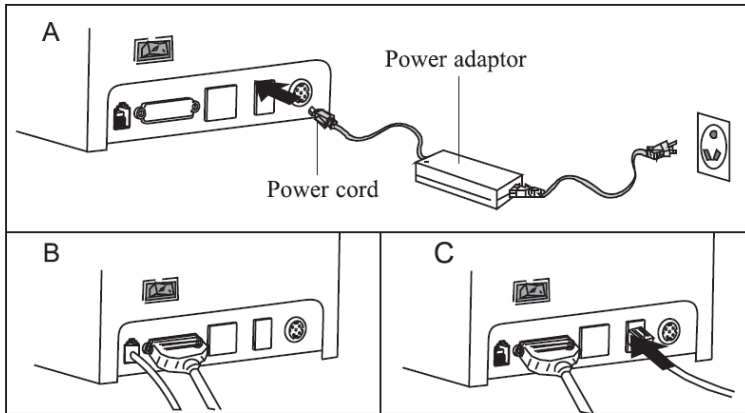


Specification

Printing method	Direct thermal
Black mark detection	Supported
Roll paper size	79.5mm +/- 0.5mm
Column capacity	576 dots/line or 512 dots/line
Character size	ANK Font A: 12x24 dots Font B: 9x17 dots Simplified/traditional Chinese: 24x24
Command	Compatible with ESC/POS
Interface	USB+Serial+LAN
Auto cutter	Full or Partial (optional)
Reliability	Printing head life - 100 km
Barcode	UPC-A/UPC-E /JAN13(EAN13)/JAN8(EAN8)/CODE39 /ITF/CODABAR/CODE93/CODE128
NV flash	256k bytes
Input buffer	2048k bytes
Paper thickness	0.06-0.08 mm
Adaptor input voltage	AC 100V/220V, 50-60 Hz
Power supply	DC 24V-2.5A
Printer input voltage	DC 24V-2.5A
Cash drawer control	DC 24V-1A
Working environment	Temp. (0-45°C, humidity (10-80%))
Storage environment	Temp. (-10-60°C, humidity (10-90%))
Drivers	Win9X/Win 2000/Win 2003/Win XP/Win7/Win 8/Win 8.1/Win 10/Linux

Connection

1. Connect AC power cord to power outlet, connect DC power cord to printer.
2. Connect the printer to the computer.
3. Connect cash drawer to the printer.

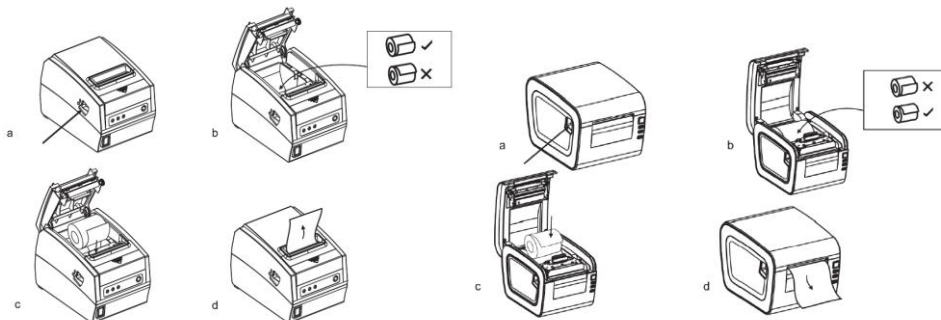


Paper Roll Loading

80mm thermal paper roll is recommended for 80mm series printers.

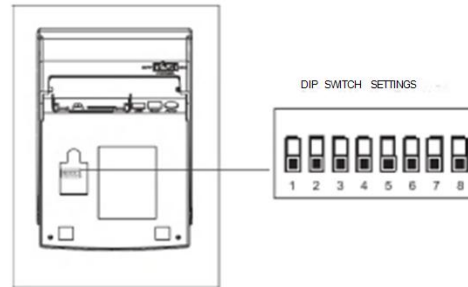
Loading paper into the printer:

1. Open top cover
2. Drop paper roll into slot indicated in (b).
3. Pull the paper roll into the paper holder (c).
4. Print one self-test to make sure paper is correctly installed.



Setting print mode (DIP Switches)

Settings can be changed to different options including: cutter, languages, beeper, print density, baud rate, etc.



DIP Function				
<u>No.</u>	<u>Function</u>		<u>ON</u>	<u>OFF</u>
SW-1	Select cutter		NO	YES
SW-2	Select beeper		YES	NO
SW-3	Select print density		Dark	Light
SW-4	Two-byte character code		NO	YES
SW-5	Character per line		42	48
SW-6	Cutter with cash drawer		YES	NO
SW-7	ON	OFF	ON	OFF
SW-8	ON	ON	OFF	OFF
Transmission speed (bps) - bit/sec	38400	115200	9600	19200

Button Name with LED light and function

1. **FEED button.** Press to feed paper manually.
2. **POWER indicator.** Light on means connected properly. Blue and red light means paper low.
3. **ERROR button.** Alarm is indicated with out of paper, cutter error or print head overheating.

Self Test

When printer is turned on, turn it off. Press "FEED" button and turn on the power at the same time. After two (2) seconds, release the FEED button, and a completed self-test should print out to show printer settings.

Hexadecimal mode

When printer is turned on, turn it off. Press "FEED" button and turn on the power at the same time. After ten (10) seconds, release the FEED button to enter hex dump mode. The print out will show the Hexadecimal Dump.

Reset

When printer is turned on, turn it off. Press "FEED" button and turn on the power at the same time. After twenty (20) seconds, release the FEED button, reset is successful if a beep is heard.

QR Code Function

1) QR Code: Set Unit Size

[Command Code]

ASCII: GS (0 g n

Decimal	29	40	107	48	103	n
Hex	ID	28	6B	30	67	n

Function Description: Set the unit size of QR Code into "n"

Parameter Range: $1 \leq n \leq 16$

Default n = 3

Note: N dot = Unit width = Unit height

The ESC @ command setup failed when printer is powered off and reset.

2) QR Code: Set up error correcting grade

[Command Code]

ASCII: GS (0 i n

Decimal	29	40	107	48	105	n
Hex	ID	28	6B	30	69	n

3) Function Description: Set up QR Code error correcting grade

The meaning of parameter "N" is as below:

n	Instruction	Correct proportion (%)
48	Grade L	7
49	Grade M	15
50	Grade Q	25
51	Grade H	30

Parameter Range : $48 \leq n \leq 51$

Default: n = 48

Note: QR Code used RS algorithm to generating error correcting Code and the command setting will be expired when printer was reset and powered off.

4) QR Code: Data transmission to code cache

[Command Code]

ASCII:

Decimal	29	40	107	48	103	n nL nH dl...dk
Hex	ID	28	6B	30	69	n nL nH dl...dk

Function Description: Setting QR Code data transmission to code cache

Parameter Range: $4 \leq (nL + nH \times 256) \leq 2710$

$32 \leq d \leq 255$

Default: None

Note: After receiving, The data will be kept until reset of next time.

K byte dl... dk be regarded as coded data

D1dk only can contain below data in the table.

Character sheet	Including the below characters in the table
Figure	"0"~"9"
Letter and Figure	"0"~"9", "A"~"Z", SP, S, %,
Chinese Character	GB18030-2000, Shift-JIS, JISX0208 standard
8-bit data	00H-FFH

5) QR Code: Printing QR Code of code cache

[Command Code]

ASCII: GS (0 ?

Decimal	29	40	107	48	129	
Hex	ID	28	6B	30	81	

Function Description: Printing the encoding data of QR Code code cache

Parameter Range: None

Default: None

Note: If the QR code size is beyond printing area, printing will be cancelled.

If the code cache data is empty, Printing will be cancelled.

USB port and Virtual Com Port exchange command set

[Command code]

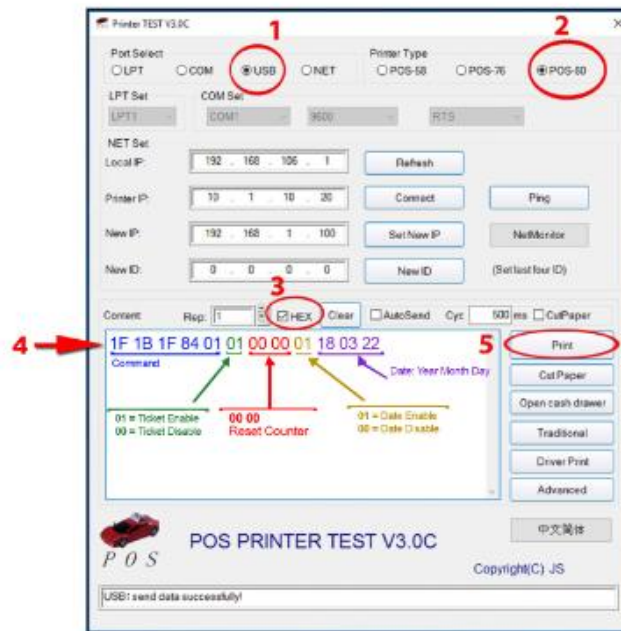
Decimal	31	27	31	184	19	20	N
Hex	IF	IB	IF	B8	13	14	N

Description: Through above command sets could exchange Real USB port and Virtual Com Port

Range: N=0 USB;N=1 Virtual Com Port.

(Must printer connected accordingly) As shown in below picture.

Setup Ticket function and ticket Date



This example will set the ticket function ON and to 000 and the date to 03 /22/2018

Cutter stuck maintenance

- 1) Turn off the power and then restart.
- 2) Turn the gear on printing head , cutter can be returned to its original position.

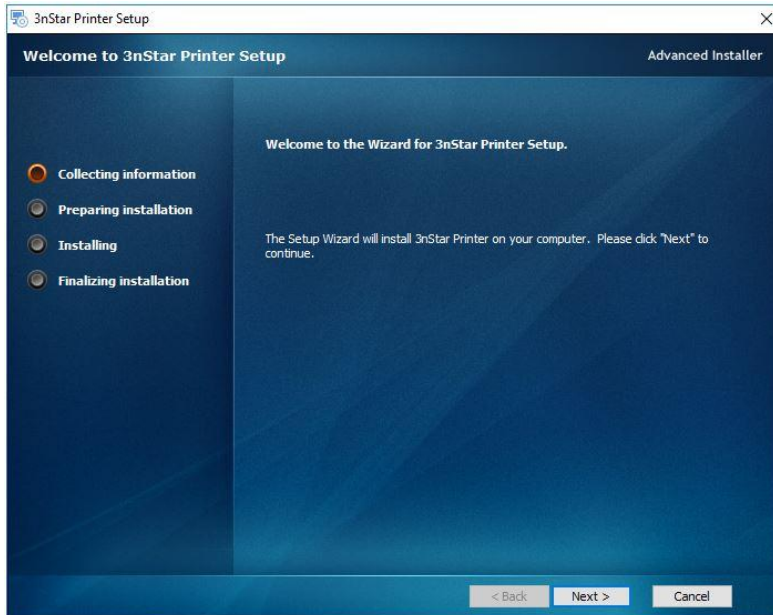
A Notice: To avoid the damage of the printing head and automatic paper cutter, please do not open cutter and mechanism.

Driver installation

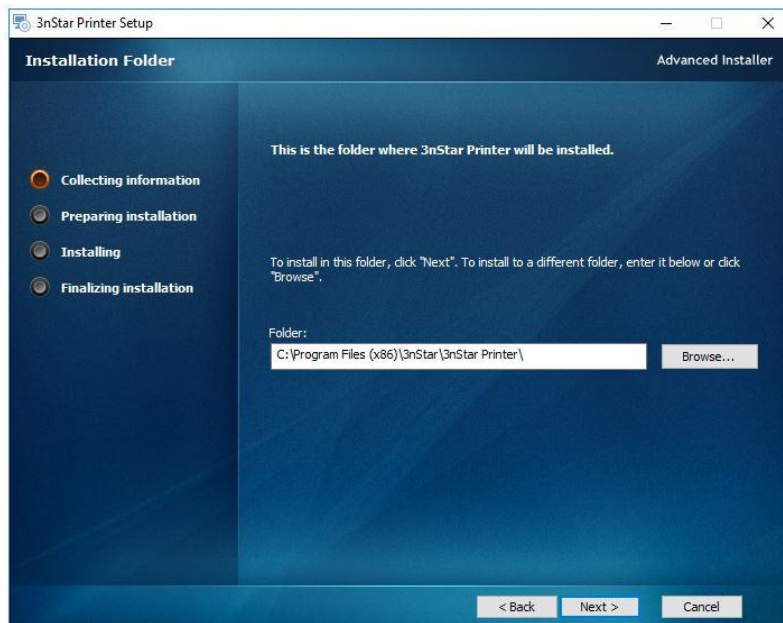
- 1) Install driver and print through Win OS.
- 2) Printing via port directly.

Install driver under WINDOWS OS (Steps listed below):

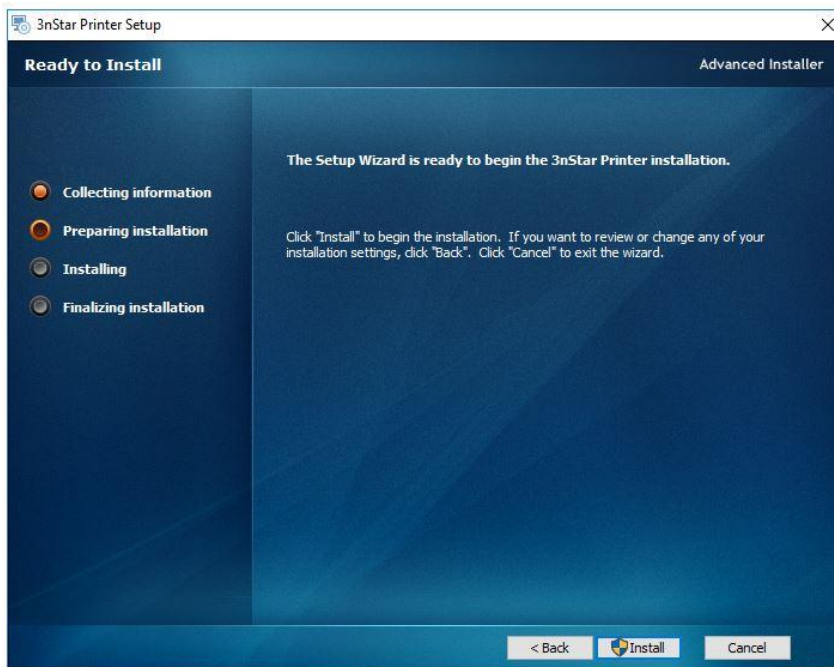
1. Double-click driver icon for printer set-up



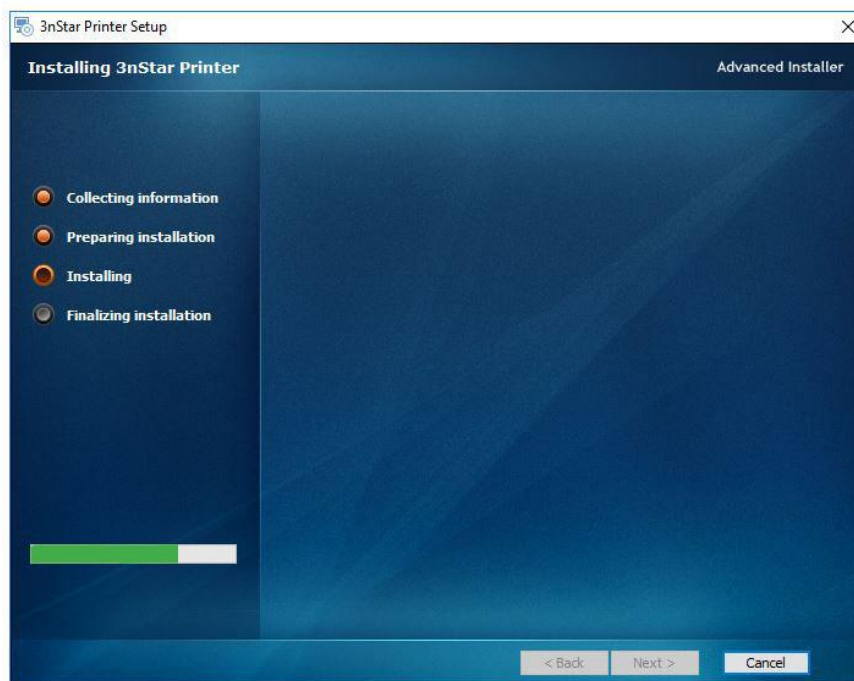
2. Select folder where application will be installed



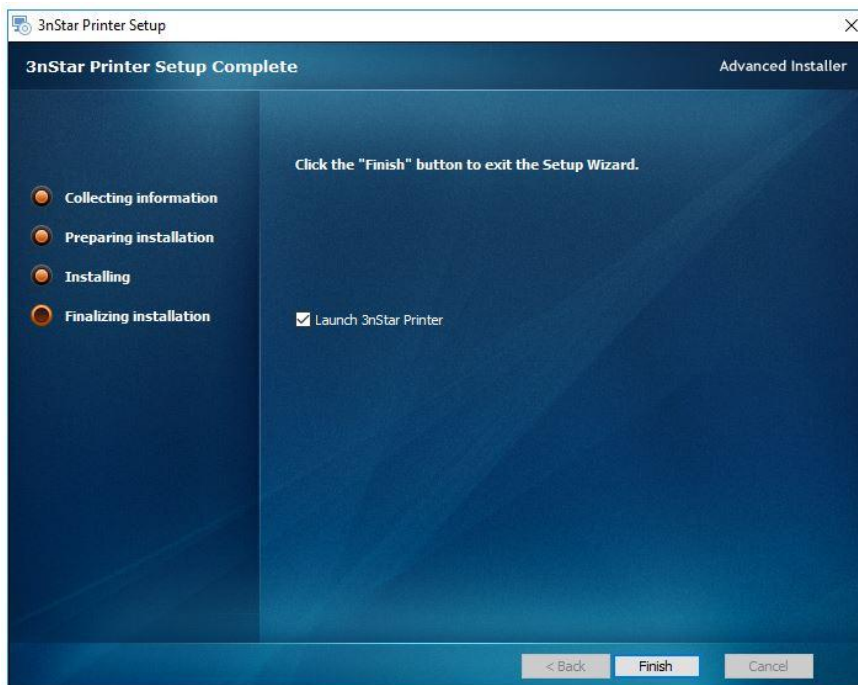
3. Click "Install" to begin the installation



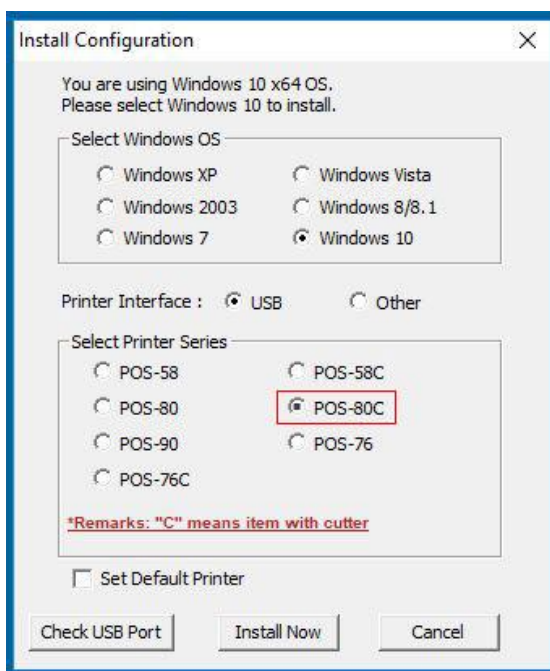
4. The installation process will update the status



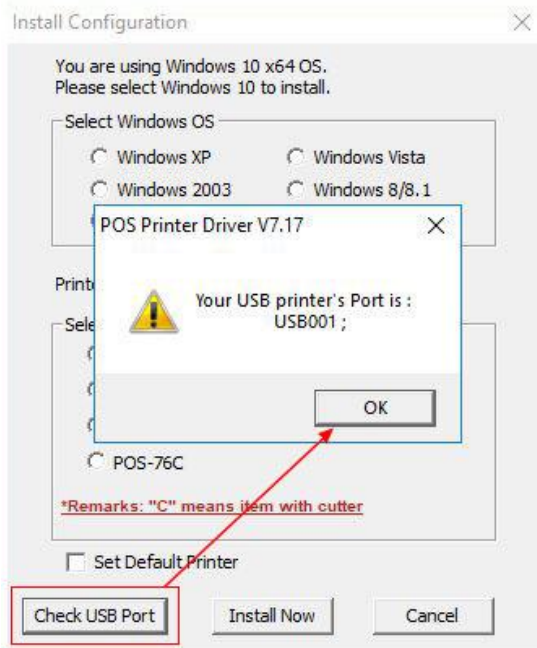
5. Click "Finish" to complete the installation



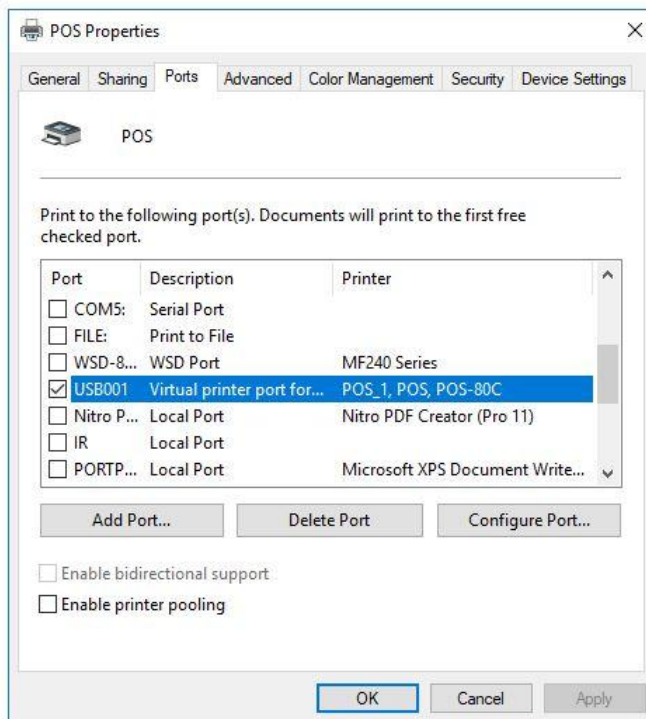
Choose "POS-80C" from the Install Configuration



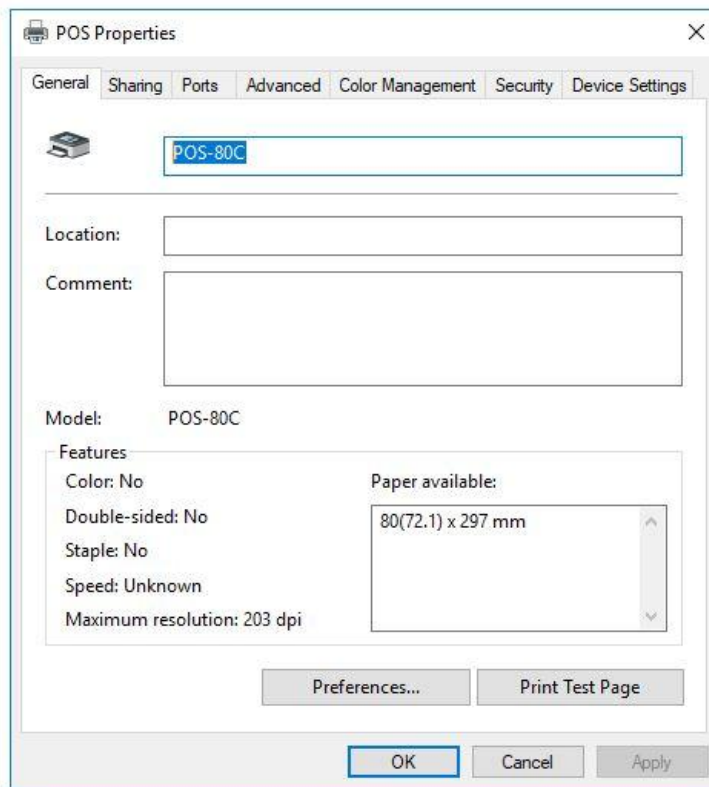
Select "Check USB Port" for POS Printer Driver



Choose "USB001" in the POS Properties Control Panel



Select "General" tab and print test page



Printing directly via port:

- Does not require installation of printer driver. Choose directly at appropriate port (i.e., USB, Serial) in software.
- Printing via port uses commands to control printer
- ESC/POS commands are integrated directly

Clearance issues

Clean printing head if any of the following occur:

1. Printing is blurred or unclear
2. Vertical columns blurred or unclear
3. Paper feeds noisily

Printing head cleaning steps:

1. Turn printer off, unplug the power cord.
2. Open top cover, take out paper roll.
3. Wait until printing head has cooled.
4. Clean printing head with swab and alcohol. Do not use water.
5. Close top cover until alcohol evaporates.
6. Reconnect power, turn unit on, print self test.
7. Repeat, if needed.

**NOTICE:**

- Turn power off when cleaning the unit.
- Don't touch or scratch printing head surface, roller or sensors.
- Avoid gas, acetone or organic solvents.
- Before powering unit up and printing self test, wait until alcohol has evaporated after cleaning.



Warning: No part of this manual can be changed without agreement. The company reserves the rights to modify the technology, components, software and hardware. You may ask your dealer for more product information. No part of chapter in this manual can be copied or transmitted in any format without permission.