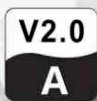




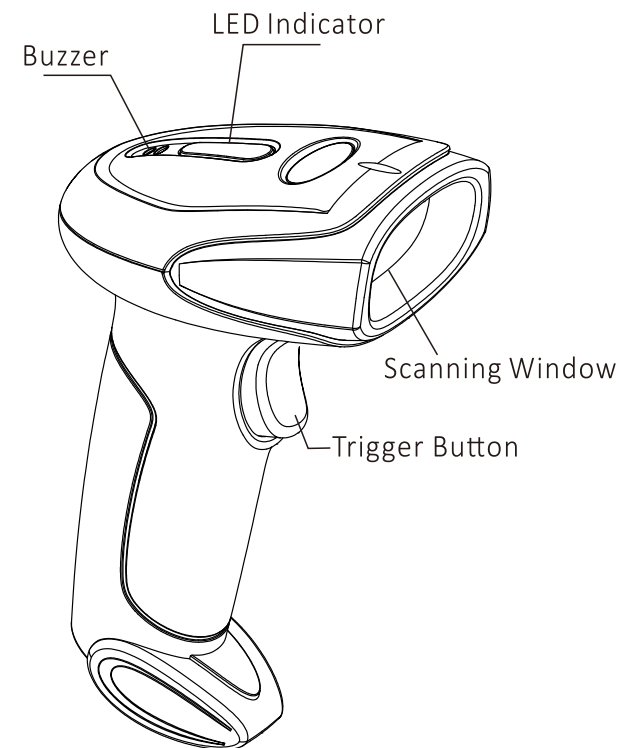
SC050
Laser Handheld Barcode Scanner
1D USB With Base

User Manual



www.3nstar.com

1 Scanner Overview

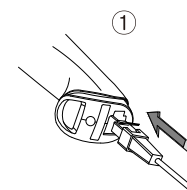


Barcode scanner

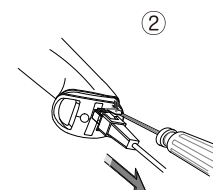
Note: Product appearance depends on goods

2 Cable plug&Unplug

(Pluggable scanner applies)



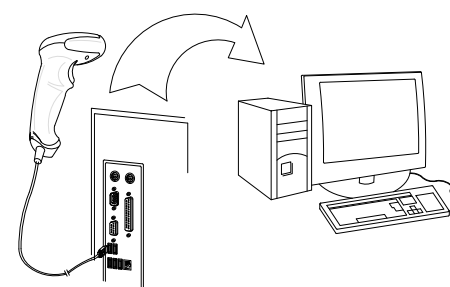
① Plug as picture above



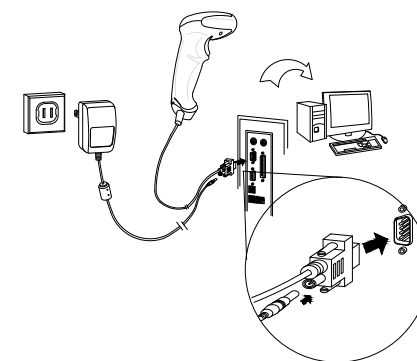
② Press the buckle click, then pull out the cable

3 Connection Guide

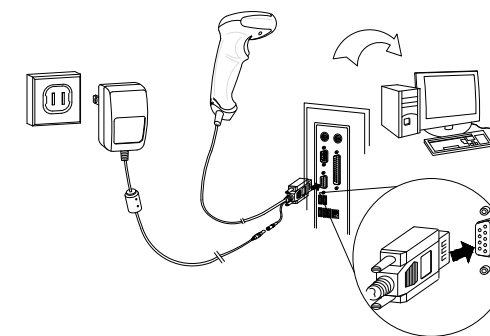
(1).USB cable



(2).RS232 cable



(3).RS485 cable



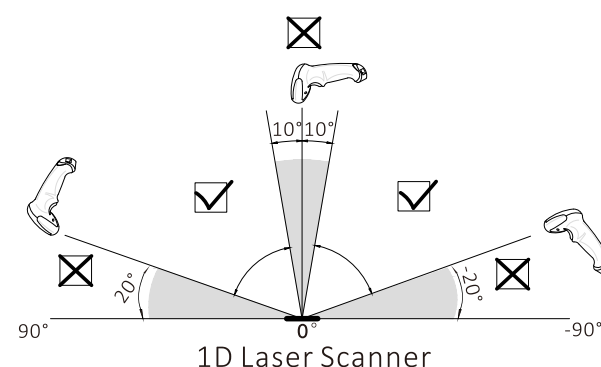
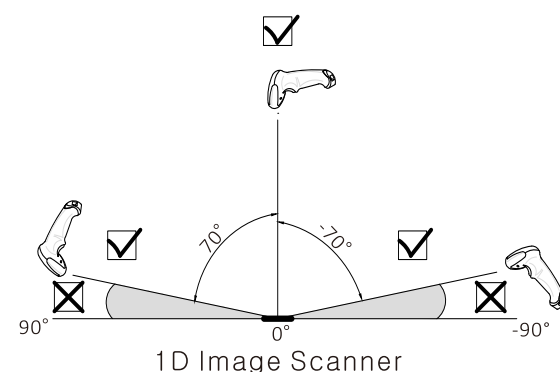
Lights Indicator

LED Indicator	Explanation
Blue light blinking	Decoding Successfully
Red light On	Standby status

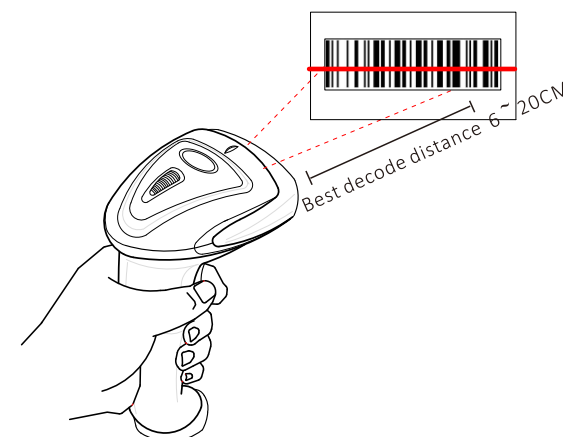
Buzzer

Beep Indication	Explanation
One Beep	Decoding Successfully
Three Beep	USB Data transfer failed
Four Beep	Power on
Continuous Beep	Successfully parameter setting

4 Scanning Angle



5 Methods



Correct



Wrong



NOTE: Laser beam or Red LED light should be full covered on the bar code

? Troubleshooting Q&A:

Q1:USB bar code scanner with “beep beep beep” after scanning and no data uploaded.

A1: Unplug and plug the scanner into another USB port.

Q2: USB bar code scanner without data upload and alarm buzzer after scanning.

A2: Restore factory default.

Q3:No laser beam or LED after connection via Rs232.

A3: Refer to Data cable connection guide and check the power supply

Q4. No data upload and alarm buzzer after scanning via Rs232.

A4: Terminal should have software to transfer data when using RS232,not cursor position.

Decode Settings

Setting Step

1

Scan the bar code of “Enter setting”



Enter Setting



2

Scan the function bar codes



3

Scan the bar code of “Exit and Save”



Exit and Save

Function bar codes

①Defaults Parameter

1、Restroe default parameter will not change interface Mode. Refer to interface mode selection for setting interface.

2、With “*” in bold means default parameter.



Restore Defaults

②Numeric Keypad

This functions is useful when using non-English OS and Keyboard layout.



Enable Numeric Keypad



*Disable Numeric Keypad

③Interface Mode

According to your requirements to select the correct interface mode as blow.



Serial Output



USB HID Keyboard



USB VCOM



USB&Serial Output Automatically

④Auto Trigger (Optional)

When the scanner detects an object in its field of view, it will be trigger and attempt to decode without press the button



*Disable auto trigger



Enable auto trigger

⑤Code39 Setting



Transmit ST/SP



*Not Transmit ST/SP



*Disable Full ASCII Code39



Enable Full ASCII Code39

⑥Suffix Values

Suffix can be appended to scan data for use in data editing.



None



0x0A (LF)



TAB



*0x0D (CR)



0x0D 0x0A (CR LF)

⑦Trigger Mode

Single decode: When a bar code has been decoded, the reader will be turned off. The reader must be triggered again to read another label.

Continuous decode: The reader will produce as much data as it can decode regardless whether it is the same or not. This mode is mainly used for demonstration and diagnosis.



*Single Read



Continuous Read

⑧Decode Mode

Disable repeat decode: Disable continue to read the same bar code.

Multiple read: The same label can only be decoded again after the label has not been detected for a number of scans. (This mode can only be programmed in Continuous read trigger mode.)



Disable repeat decode



*Enable repeat decode



Multiple decode

⑨Keyboard Language

The selecting of key board layout supports many country.



*US



French



German



Turkish



French Belgian



Brazil



Czech



Spanish



Italian

⑩UPC Setting



Enable UPC-E convert to UPC-A



*Disable UPC-E convert to UPC-A



Enable UPC-A convert to EAN-13



*Disable UPC-A convert to EAN-13